



River Gardens Walk, SE10

£650,000

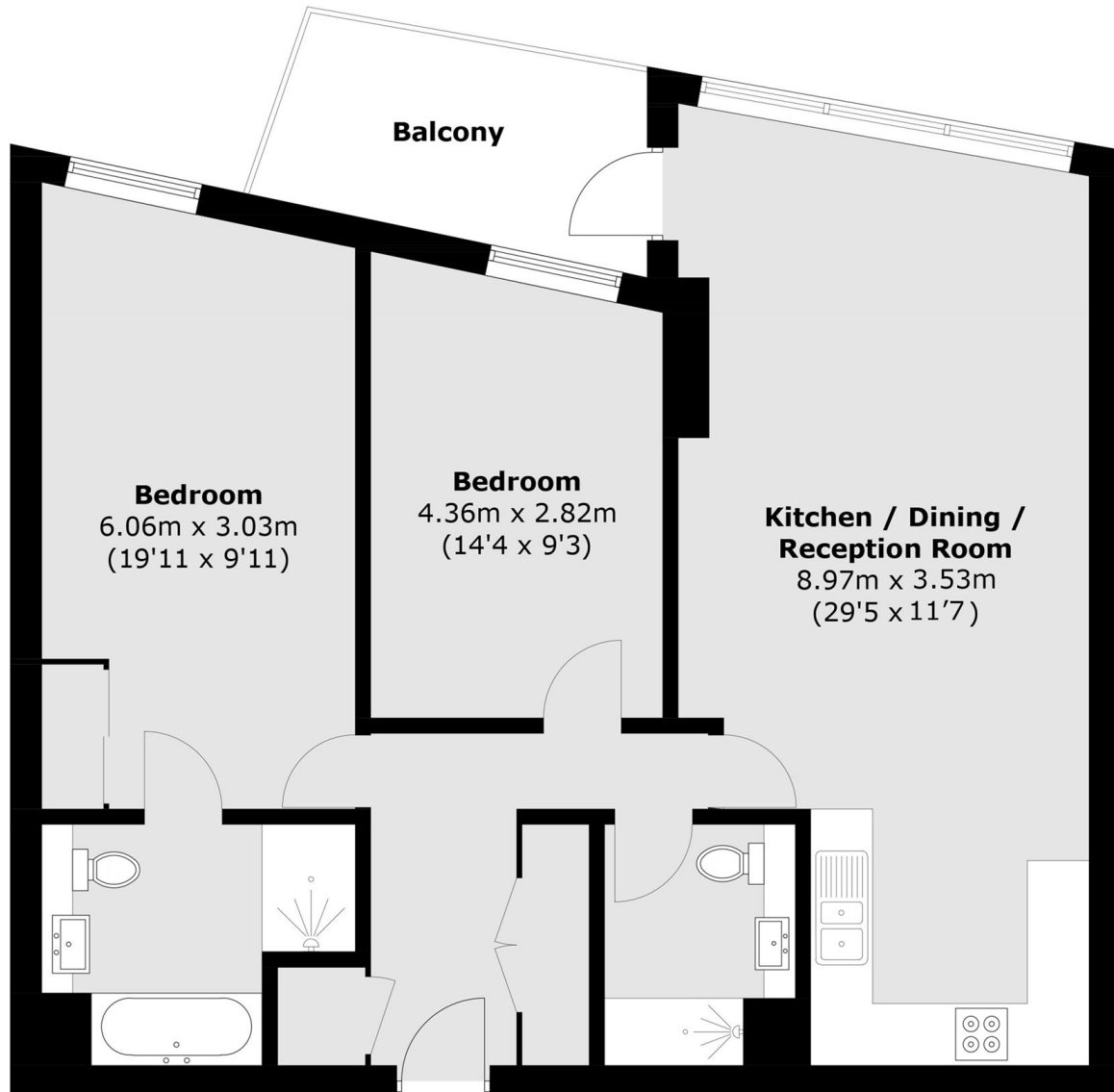
This stunning two bedroom two bathroom apartment is based in a modern high end development, with a 24hr concierge service, pool, gym, tennis court, playground and a private communal garden. The apartment itself boasts an open-plan living and dining area with floor-to-ceiling windows that flood the space with natural light. Further benefiting from a private balcony with direct river views, private parking, bike storage and a storage cage.

The River Gardens development is located on the banks of the Thames and has a fantastic community feel near local coffee shops and pubs. It is a short walk from Greenwich Town, with its famous market and historical sights. It is near Greenwich Park where you can walk among historic sites such as the Royal Observatory and the National Maritime Museum. Additionally, the development's close proximity to the River Thames allows for scenic riverside walks and easy access to various leisure activities. The location offers superb links into central London. A short walk away you will find Maze Hill Rail Station, Cutty Sark DLR and North Greenwich Jubilee Line, which allows you access to London Bridge Station, Canary Wharf (Jubilee and Elizabeth Line) and the O2 arena.

Features

- Siemens Appliances
- Two Bathrooms
- Under Floor Heating In Bathroom
- Two Bedrooms
- Chain Free
- Sought After Location

River Gardens Walk,
London, SE10



Total area (approx.): 84.3 sq. m (907.4 sq. ft)
Balcony area (approx.): 6.8 sq. m (73.2 sq. ft)