



Harrison Walk, SE10

£570,000

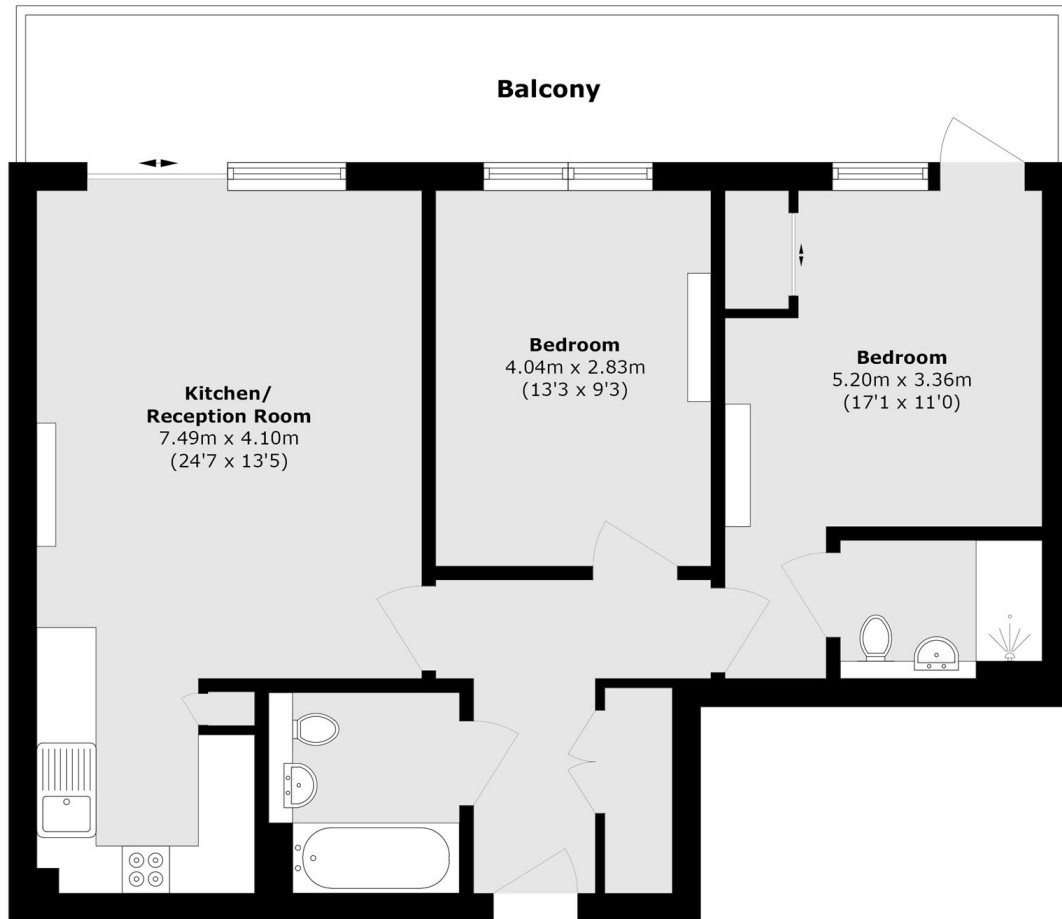
A well presented two bedroom, two bathroom apartment with direct Thames river views from a large private balcony. Offers open plan living with hardwood flooring, floor to ceiling windows and on site facilities such as gym, swimming pool and concierge services. This property further benefits from a parking space and from being fully EWS1 compliant.

Ideally located 0.8 miles away to Cutty Sark for the DLR. Local amenities consist of local shops, restaurants and café's.

Features

- Two Bedrooms
- Two Bathrooms
- Sought After Location
- Chain Free
- Parking
- Gym & Swimming Pool

Harrison Walk,
London, SE10



Total area (approx.): 71.1 sq. m (765.3 sq. ft)
Balcony area (approx.): 17.2 sq. m (185.1 sq. ft)