



Shacklewell Lane, E8

£1,750,000

An architecturally designed Victorian end of terrace with a South East facing garden. Set across three storey's this home has been thoughtfully renovated throughout to a high standard by its owners, yet retains many of its original period features.

Ideally located within walking distance to the authentic Ridley Road and Broadway Markets, roof top bars, brasseries and independent shops & cinema. Dalston Kingsland, Hackney Downs and Dalston Junction Stations are close by for easy access to Liverpool Street and Central London. Many bus routes are also available on Kingsland Road.

Features

- Victorian Terrace
- Architecturally Designed
- Four Bedrooms
- Two Reception Rooms
- Two Bathrooms
- South-East Facing Garden

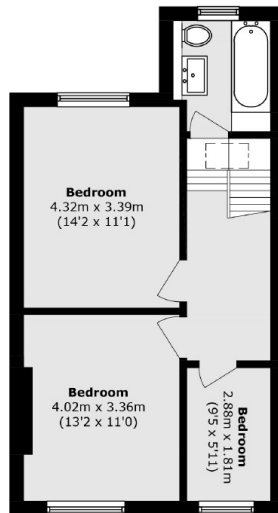


Shacklewell Lane, E8

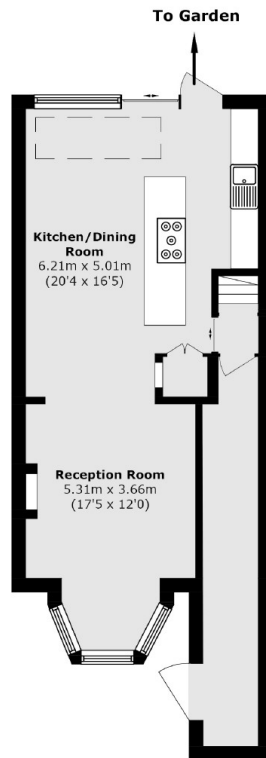
The ground floor comprises a reception room with sash bay window, marble fireplace, ornate original coving, ceiling roses, wooden shutters and wooden flooring. Double doors lead to an office or bedroom providing the flexibility to also use as another reception room if preferred. Downstairs you are greeted with a stunning glass rear extension that enhances the kitchen and living space, perfect for entertaining. The bespoke kitchen has stainless steel worktops, Smeg appliances and island. Floor-to-ceiling sliding glass doors open up to the beautifully tiered landscaped garden. Additionally, there's a discreet utility area, a separate W/C, and resin floors with underfloor heating. The wider than average hallway has the original curved staircase leading to the upper floor with three bedrooms and family bathroom, also with underfloor heating. A cleverly designed roof skylight floods the staircase with natural light. The home has double-glazed windows throughout and offers the potential for loft expansion, subject to planning approval.



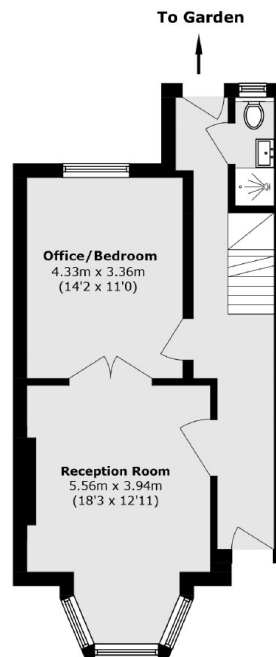
Shacklewell Lane, London, E8



First Floor



Lower Ground Floor



Ground Floor

Total area (approx.): 158.2 sq. m (1738.3 sq. ft)