



Clapton Passage, E5
£1,000,000

Dexters



Clapton Passage, E5

A rare to market Victorian terrace in a prime Lower Clapton location with a south facing garden. The home has three double bedrooms, double reception room, eat in kitchen, loft and basement.

On the ground floor you will find a double reception room/dining room with high ceilings, wooden floors and side access to the garden. The eat in kitchen at the rear of the house has double doors opening onto the well maintained south facing patio garden. There are stairs down to the large basement, which is a rare feature for a house on this passage, as well as a storage cupboard next to the kitchen which could easily be converted into a W/C. Upstairs are three double bedrooms and large family bathroom with separate W/C. The home retains many of its original period features including wooden floors, feature fireplace and cornicing, and you will find three stained glass windows in the living room adding a beautiful feature to the home.

Clapton Passage is a pedestrian only thoroughfare around the corner from Clapton Square and the Hackney Churchyard Gardens. There are many local amenities, boutique shops and cafés within walking distance on Lower Clapton Road, Mare Street and Chatsworth Road. Hackney Central & Hackney Downs Overground stations are half a mile away offering direct access into the transport hub Liverpool Street and beyond.

Features

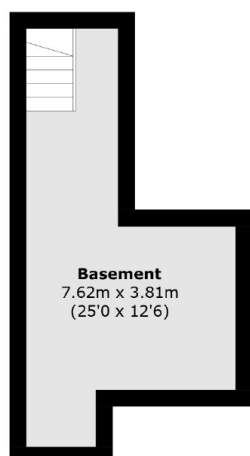
- Victorian Terrace
- Three Double Bedrooms
- Basement
- South Facing Garden
- Conservation Area
- Pedestrian Passage





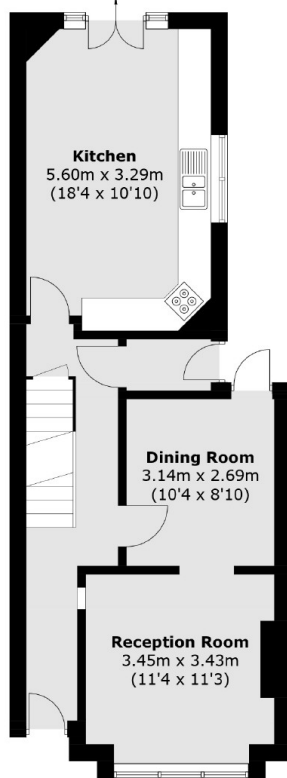


Clapton Passage, London, E5

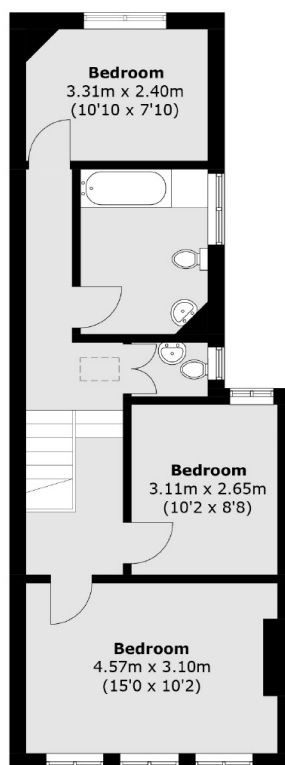


Basement

To Garden



Ground Floor



First Floor

Total area (approx.): 122.2 sq. m (1,315.3 sq. ft)