



Graham Road, E8

£1,350,000

A four bedroom Victorian terrace measuring over 1500 sq ft with a large private garden. This is the first time the house has been available in 50 years and offers a buyer to renovate and extend, subject to planning. The home is being offered chain free.

Graham Road runs between Dalston and Mare Street with many shops, cafes and amenities to choose from including Broadway Market and Kingsland High Street. It is half a mile from London Fields and its tennis courts and Lido. Hackney Central, Hackney Downs, Dalston Kingsland and Dalston Junction Overground Stations are all half a mile away.

Features

- Four Bedrooms
- Victorian Terrace
- Private Garden
- Original Features
- Renovation and Extension Potential (STPP)
- Chain Free



Graham Road, E8

On the raised ground floor you will find a double reception room with high ceilings, feature marble fireplaces, sash windows and its original ornate cornicing. There is also a single bedroom/office on this level.

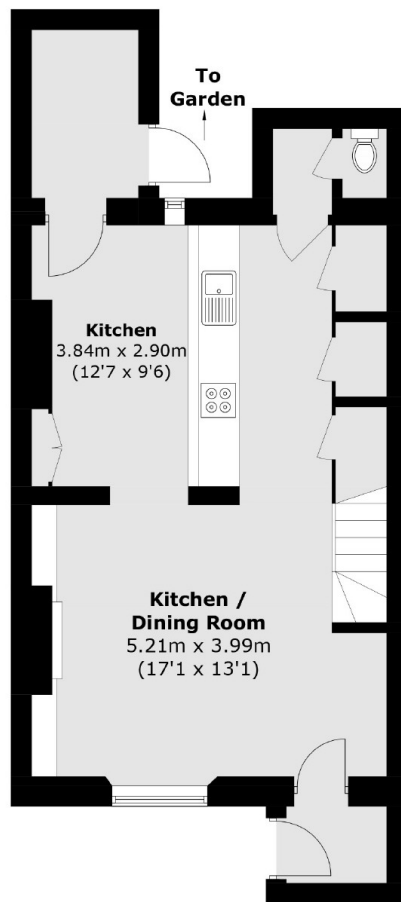
A grand curved staircase leads upstairs to three bedrooms, a family bathroom and access to a large loft space.

The lower ground floor consists of an additional reception/dining room, open plan kitchen, utility room, W/C and plenty of built in storage. There is a separate entrance from the street and access to the garden.

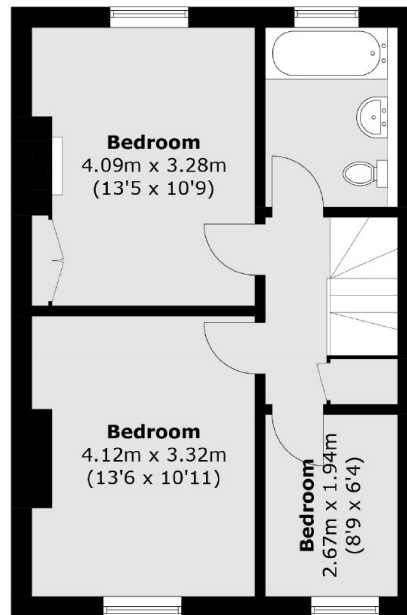
The home offers great renovation potential in a sought after E8 location.



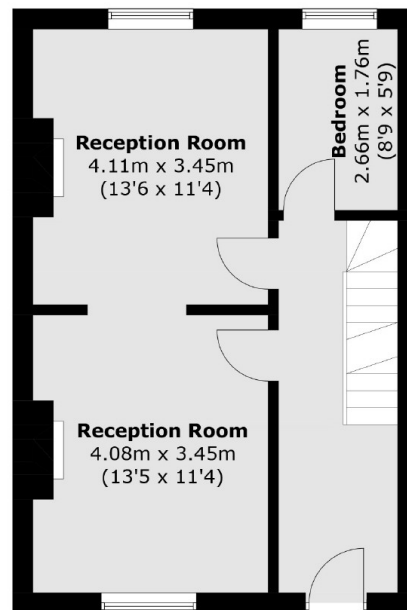
Graham Road, London, E8



Lower Ground Floor



First Floor



Ground Floor

Total area (approx.): 141.2 sq. m (1,519.8 sq. ft)