



Hassett Road, E9

£1,250,000

A four bedroom Victorian terrace that has been architecturally designed with high end finishes. The home offers over 1560 sq ft of interior living space with a side return and loft extension. Features include a private garden, polished concrete floors, bespoke cabinetry, double glazed sash windows & timber clad extension.

Hassett Road is a quiet residential street within walking distance to Victoria Park & Victoria Park Village. Chatsworth Road and its many independent shops, cafes, restaurants and Sunday Market is a quarter of a mile away. Homerton Overground is under a quarter of a mile away and Hackney Central is one mile away giving excellent transport links to the rest of London.

Features

- Victorian Terrace
- Architecturally Designed
- Four Bedrooms
- Two Bathrooms
- Victoria Park
- Private Garden



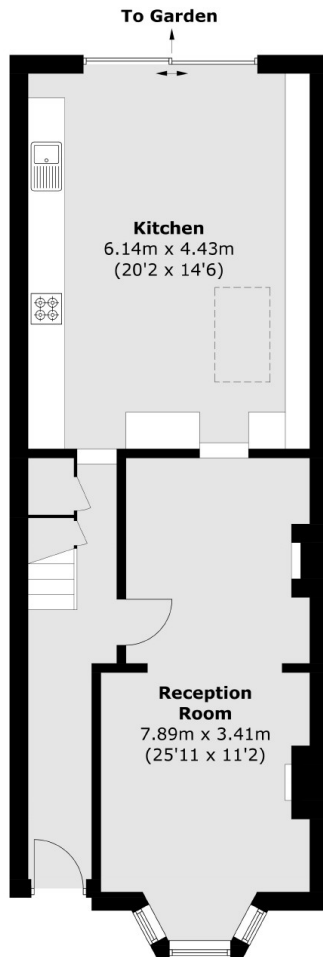
Hassett Road, E9

On the ground floor of this architecturally designed home is a double reception room with bay window, feature fireplace, original wooden flooring and bespoke shelving. To the rear of the house is an impressive side return with skylights and a wall of sliding glass large that opens onto to the landscaped patio garden with a serene Japanese Maple Tree. High end finishes have been used throughout the kitchen with polished concrete floors and underfloor heating, bespoke wooden cabinetry and banquette, marble worktops.

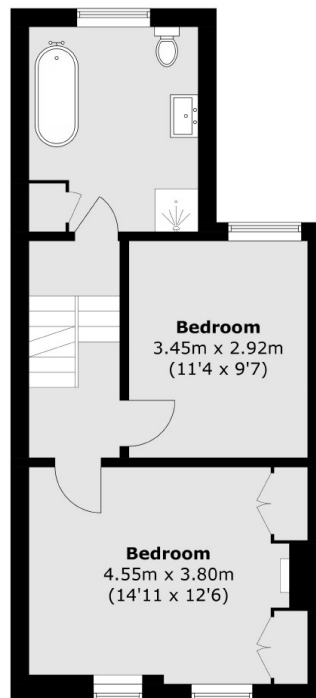
On the first floor is a large family bathroom with free standing tub and walk in shower and cast iron radiator. The primary bedroom with built in wardrobes and second bedroom are also on this floor. The newly added loft extension consists of two double bedrooms, one with en-suite with green subway tiles and gold fixtures. The stairwell is illuminated throughout the day via a roof skylight.



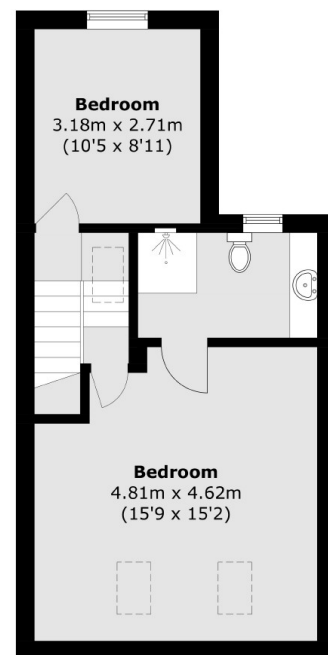
Hassett Road, London, E9



Ground Floor



First Floor



Second Floor

Total area (approx.): 145.5 sq. m (1,566.1 sq. ft)