



## Shad Thames, SE1

### £950,000

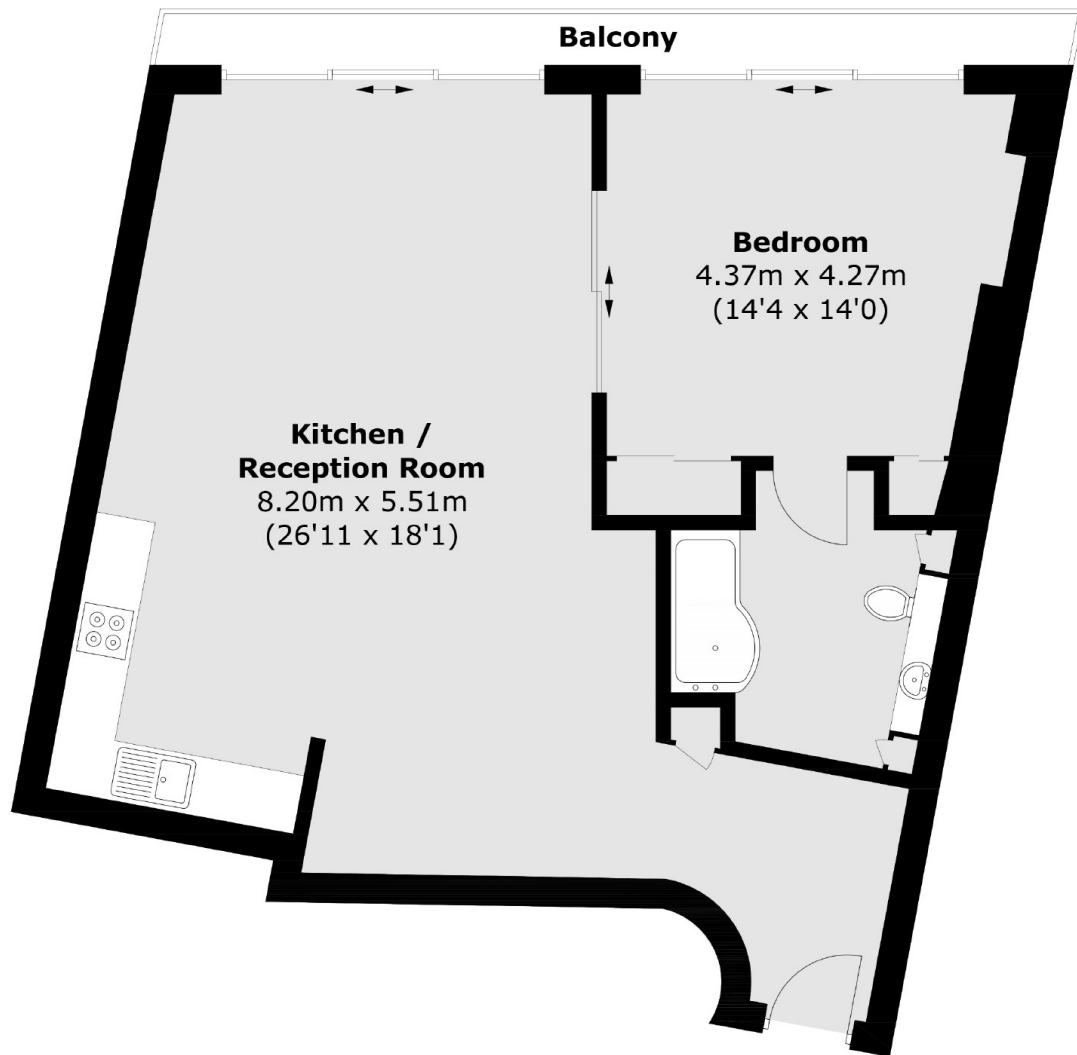
Offering incredible views of Tower Bridge, The River and The City, this stunning apartment boasts a large open plan kitchen and living space, modern bathroom, private balcony, share of the freehold, ample storage and concierge facilities.

Anchor Brewhouse is located in the heart of Shad Thames and is surrounded by a wide range of shops and restaurants. London Bridge Station is just 0.3 miles away.

### Features

- One Bedroom
- Private Balcony
- Share of Freehold
- Stunning Views
- Concierge Facilities
- Riverside Development
- Option To Purchase Parking

# Shad Thames, London, SE1



Total area (approx.): 70.8 sq. m (762.1 sq. ft)  
Balcony : 4.8 sq. m (51.7 sq. ft)

## Dexters

Canada Water  
Montreal House  
Surrey Quays Road  
London  
Sales  
020 7650 5144

Energy Rating: D. We aim to make our particulars both accurate and reliable. However they are not guaranteed; nor do they form part of an offer or contract. If you require clarification on any points then please contact us, especially if you're traveling some distance to view. Please note that appliances and heating systems have not been tested and therefore no warranties can be given as to their good working order.

 **RICS** | Regulated  
Estate Agent  
and Letting Agent

[dexters.co.uk](https://www.dexters.co.uk)