



King & Queen Wharf, SE16

£450,000

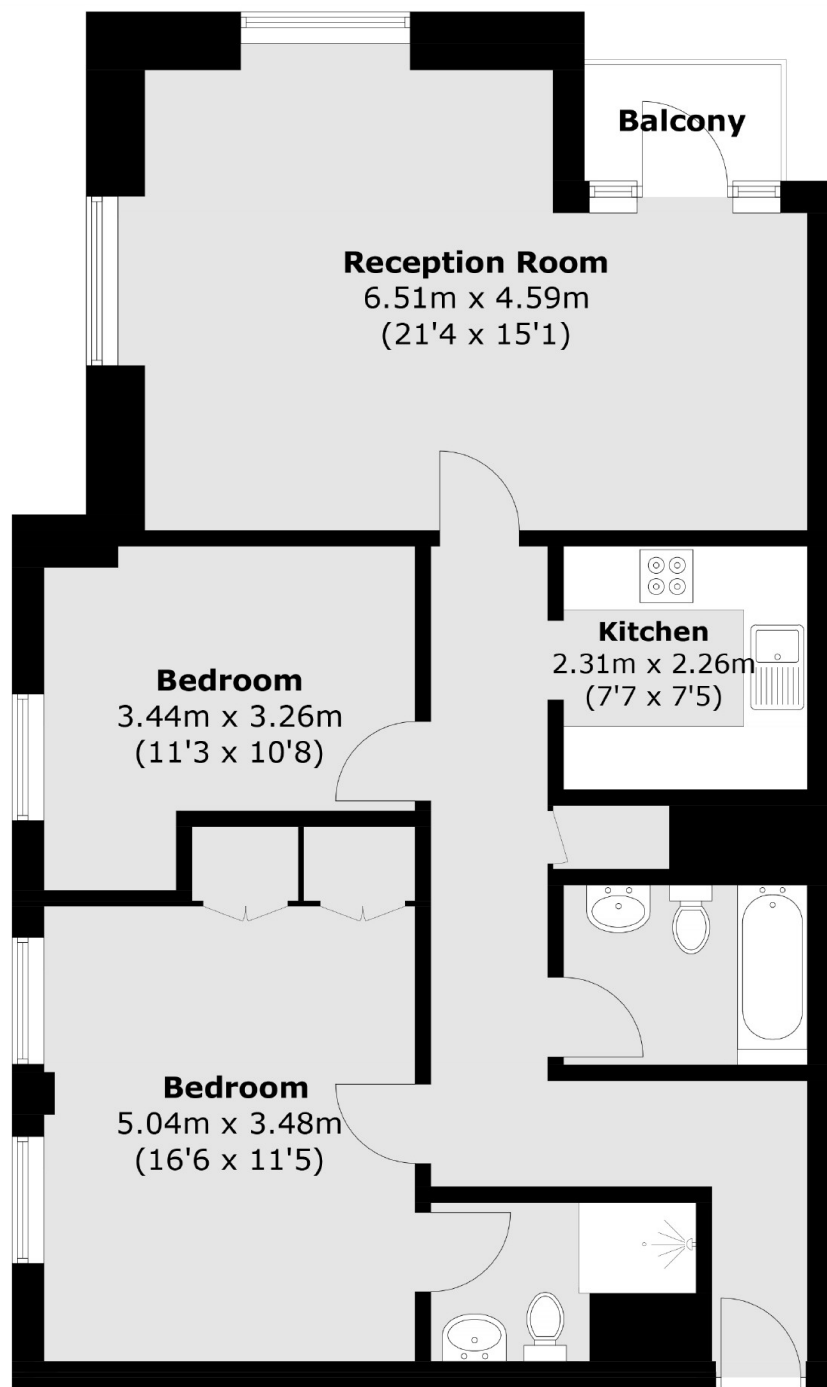
A highly sought after riverside apartment with river views, a private balcony, two double bedrooms, two bathrooms, a spacious living room and a separate kitchen, plus secure parking, resident's porter and leisure facilities.

King and Queen Wharf is 0.6 miles from Rotherhithe Station and 0.8 miles from Canada Water station. The flat offers excellent transport links to the rest of London. A number of attractions, riverside pubs and restaurants are also close by.

Features

- River Views
- Private Balcony
- Two Bedrooms
- Two Bathrooms
- Residents' Porter & Pool
- Secure Parking

King & Queen Wharf, London, SE16



Total area (approx.): 82.7 sq. m (890.1 sq. ft)
Balcony area (approx.): 2.0 sq. m (21.5 sq. ft)