



Rotherhithe Street, SE16

£500,000

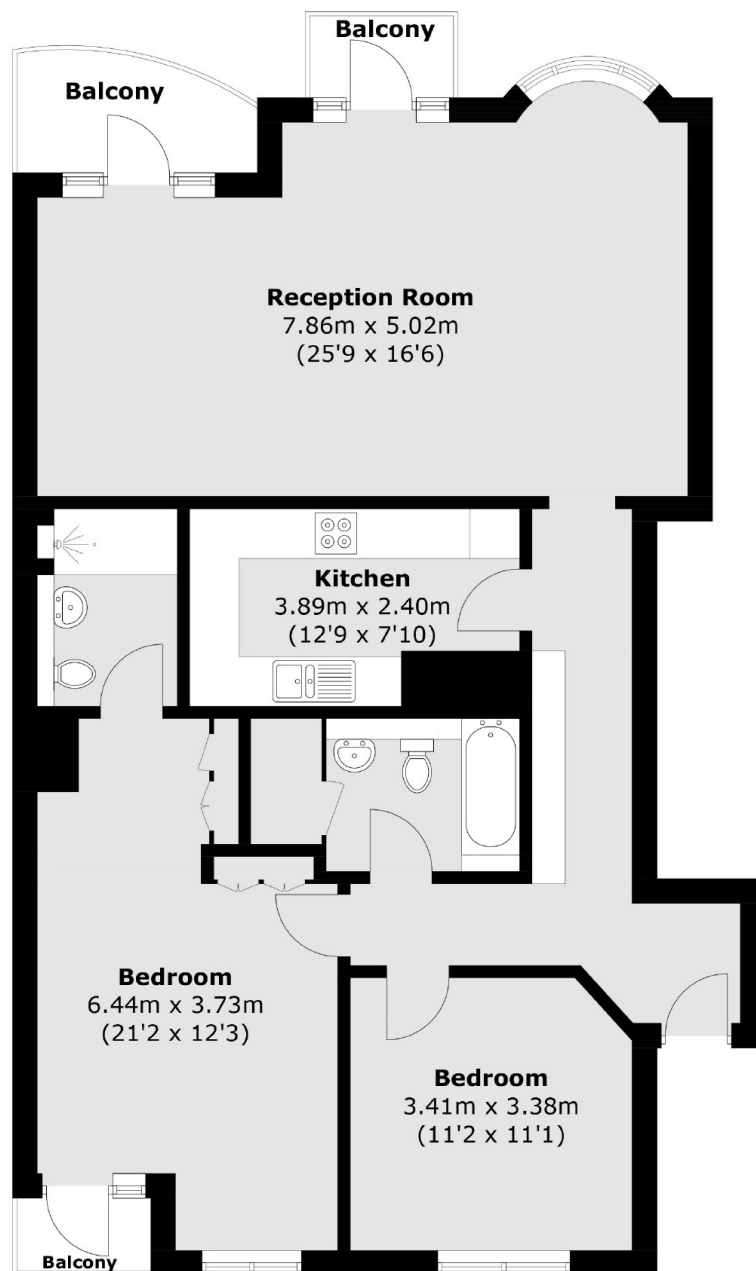
Offering stunning views of the river, this two double bedroom flat is immaculately presented and boasts a large living space with 3 floor to ceiling windows overlooking the river, separate kitchen, en-suite bathroom and family bathroom, three private balconies, two of which are directly overlooking The Thames, and parking. The development offers concierge and swimming pool facilities.

Located just 0.6 miles from Rotherhithe station and 0.8 miles from Canada Water. Windsor Court is surrounded by shops, cafés and riverside pubs and restaurants with an outstanding rated OFSTED school moments away.

Features

- Two Double Bedrooms
- Two Bathrooms
- Three Private Balconies
- Share Of The Freehold
- Concierge & Swimming Pool
- Secure Underground Parking

Rotherhithe Street, London, SE16



Total area (approx.): 100.0 sq. m (1,076 sq. ft)
Balcony : 6.9 sq. m (74.2 sq. ft)