



Horselydown Lane, SE1

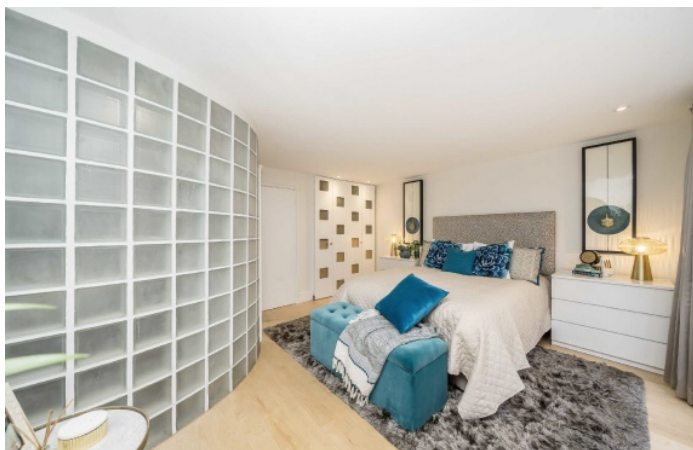
£1,000,000

With views of Tower Bridge and the River Thames from your own roof terrace, this split level apartment is in stunning condition and boasts two private terraces, a large kitchen/ diner, separate living space, two double bedrooms and two modern bathrooms.

Shad Thames is trendy and those who know it, love it. You can walk into the city, over Tower Bridge or get the underground from London Bridge or Bermondsey.

Features

- Two Double Bedrooms
- Spread Over Three Floors
- Views Of Tower Bridge
- Two Large Private Terraces
- Secure Parking
- Shad Thames



Horselydown Lane, SE1

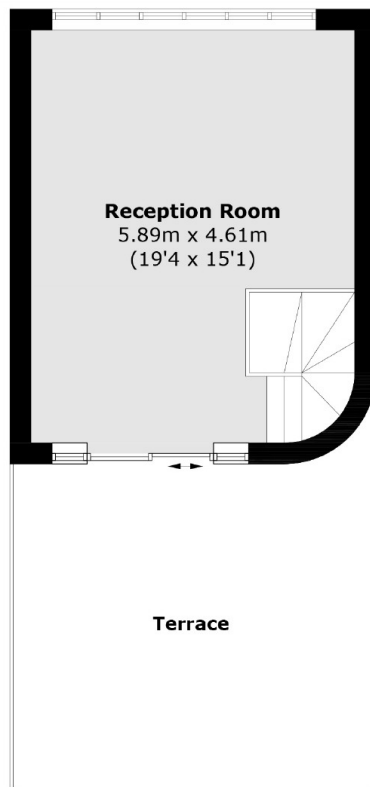
Spread across three floors and situated in the heart of Shad Thames, the flat boasts ample entertaining space along with a large private roof terrace and an additional balcony, giving amazing views.

Both bedrooms have en-suite bathrooms which are in immaculate condition and the entire flat has been redecorated throughout.

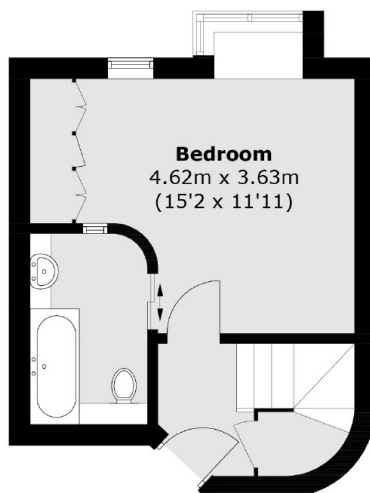
Admirals Court is an extremely desirable development located in prime Shad Thames. The development offers porter facilities as well as allocated parking.



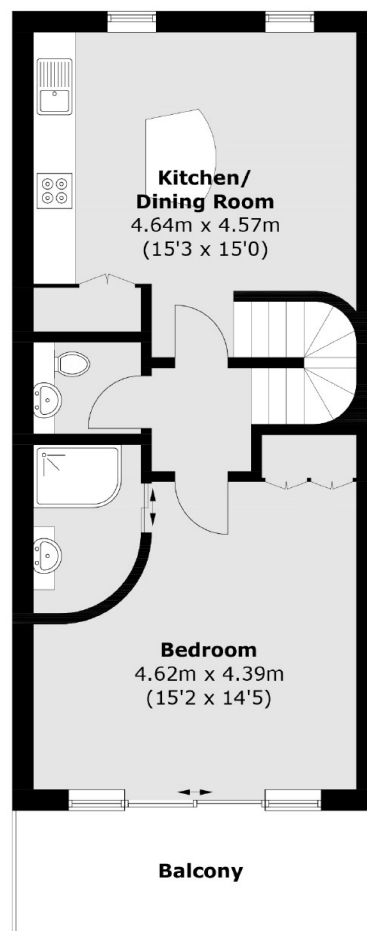
Horselydown Lane, London, SE1



Fourth Floor



Second Floor



Third Floor

Total area (approx.): 102.5 sq. m (1,103.3 sq. ft)
Balcony/Terrace area (approx.): 32.7 sq. m (352.0 sq. ft)