



Shad Thames, SE1 £395,000

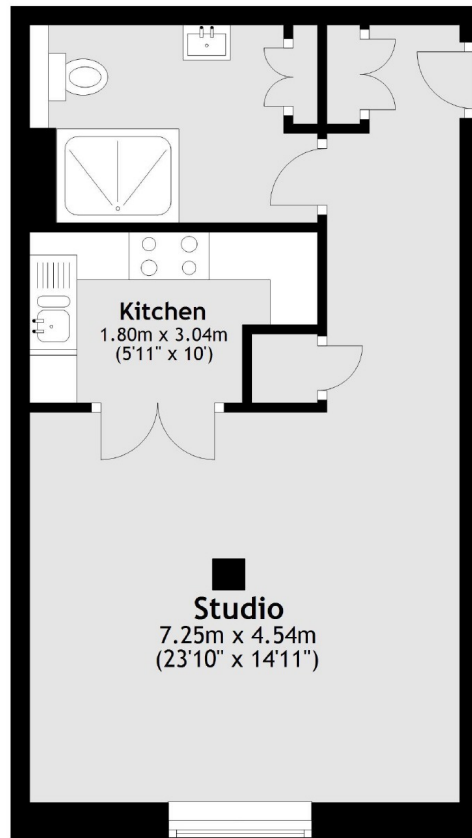
Situated within this charming converted Victorian Warehouse, this immaculately presented studio flat boasts a large living space, modern kitchen and bathroom, ample storage, secure allocated parking and porter facilities.

St. Saviours Wharf is in prime central Shad Thames, within 0.5 of a mile of London Bridge Station, the Shard & Borough Market beyond. A wide range of shops, bars & restaurants are moments away.

Features

- Studio Apartment
- Fantastic Condition
- Warehouse Conversion
- Porter
- Share Of The Freehold
- Secure Allocated Parking

Shad Thames, London, SE1



Total area: approx. 38.1 sq. metres (410.6 sq. feet)

Dexters

London Bridge
54 Borough High Street
London
SE1 1XL
Sales
020 7650 5 100

Energy Rating: C. We aim to make our particulars both accurate and reliable. However they are not guaranteed; nor do they form part of an offer or contract. If you require clarification on any points then please contact us, especially if you're traveling some distance to view. Please note that appliances and heating systems have not been tested and therefore no warranties can be given as to their good working order.

 **RICS** | Regulated
Estate Agent
and Letting Agent

[dexters.co.uk](https://www.dexters.co.uk)