



## Shad Thames, SE1

### £600,000

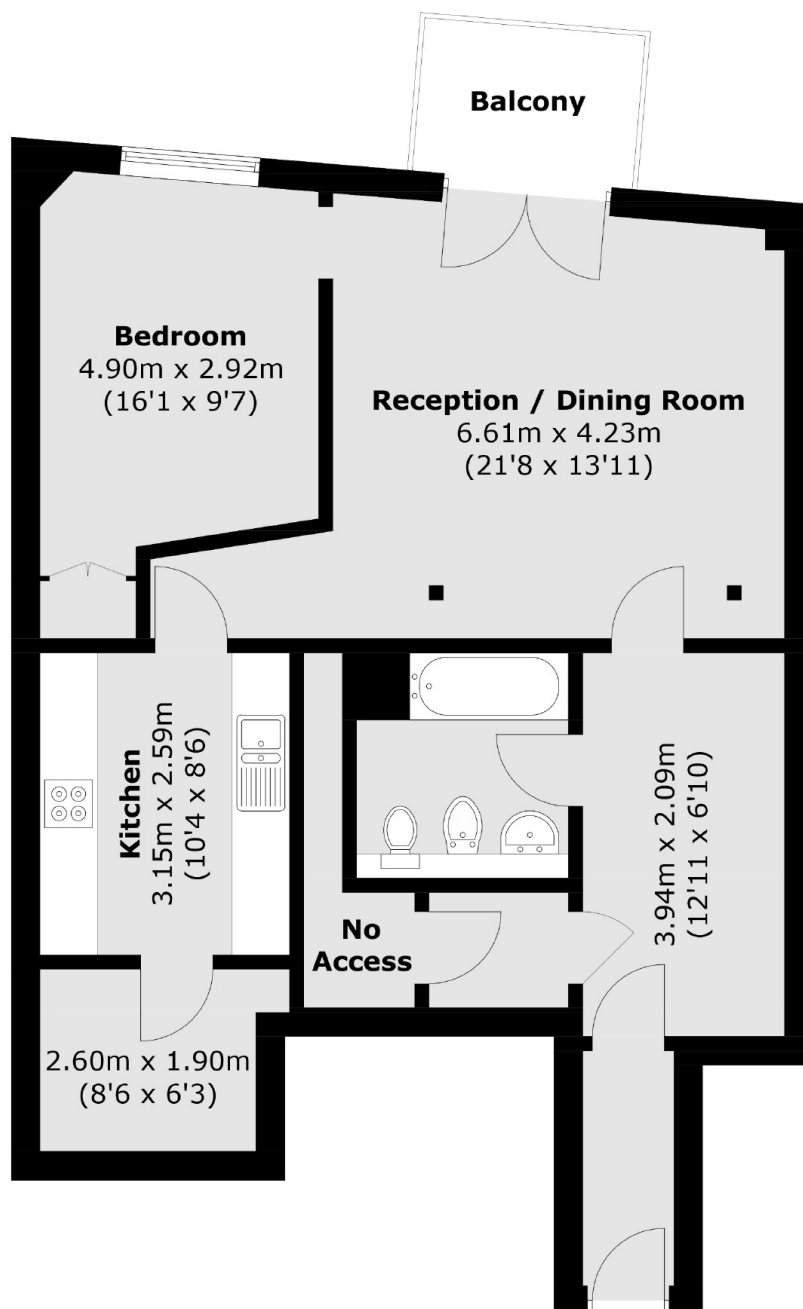
Situated moments from the river, this one double bedroom apartment is immaculately presented and boasts a large living space, private balcony, separate kitchen, ample storage, allocated parking space and concierge facilities.

Cardamom Building is located in the heart of Shad Thames offering a wide range of shops, restaurants and delis. London Bridge station is only 0.5 miles away.

### Features

- One Double Bedroom
- Excellent Location
- Allocated Parking Space
- Concierge Facilities
- Chain Free
- Fantastic Condition

# Shad Thames, London, SE1



Total area (approx.): 72.2 sq. m (777.1 sq. ft)  
Balcony area: 3.7 sq. m (39.8 sq. ft)

## Dexters

London Bridge  
54 Borough High Street  
London  
SE1 1XL  
Sales  
020 7650 5 100

Energy Rating: . We aim to make our particulars both accurate and reliable. However they are not guaranteed; nor do they form part of an offer or contract. If you require clarification on any points then please contact us, especially if you're traveling some distance to view. Please note that appliances and heating systems have not been tested and therefore no warranties can be given as to their good working order.

 **RICS** | Regulated  
Estate Agent  
and Letting Agent

[dexters.co.uk](https://www.dexters.co.uk)