



Old Jamaica Road, SE16

£600,000

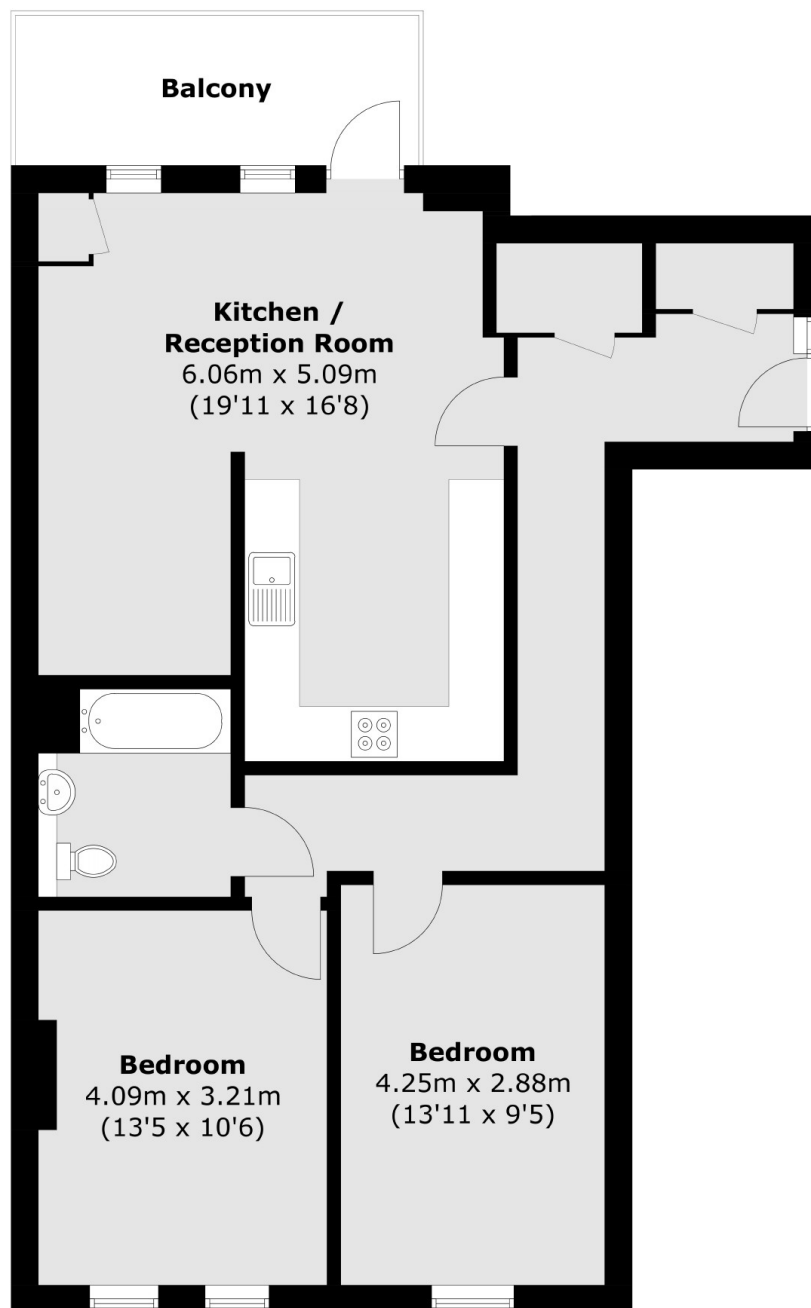
Situated within a secure modern development, this bright and airy two double bedroom flat is immaculately presented and boasts a large open plan kitchen and living room, modern bathroom, private balcony, communal garden and ample storage.

Queens Court is surrounded by a wide range of shops, cafés, artisan delis and trendy food markets. Bermondsey station is just 0.3 miles away and London Bridge station is 0.9 miles away.

Features

- Two Double Bedrooms
- Excellent Condition
- Private Balcony
- Communal Garden
- Valid EWS1 Form
- Fantastic Location
- OIEO £600,000

Old Jamaica Road, London, SE16



Total area (approx.): 77.6 sq. m (835.3 sq. ft)
Balcony: 7.2 sq. m (77.5 sq. ft)

Dexters

London Bridge
54 Borough High Street
London
SE1 1XL
Sales
020 7650 5 100

Energy Rating: B. We aim to make our particulars both accurate and reliable. However they are not guaranteed; nor do they form part of an offer or contract. If you require clarification on any points then please contact us, especially if you're traveling some distance to view. Please note that appliances and heating systems have not been tested and therefore no warranties can be given as to their good working order.

 **RICS** | Regulated
Estate Agent
and Letting Agent

dexters.co.uk