



## Gainsford Street, SE1

£750,000

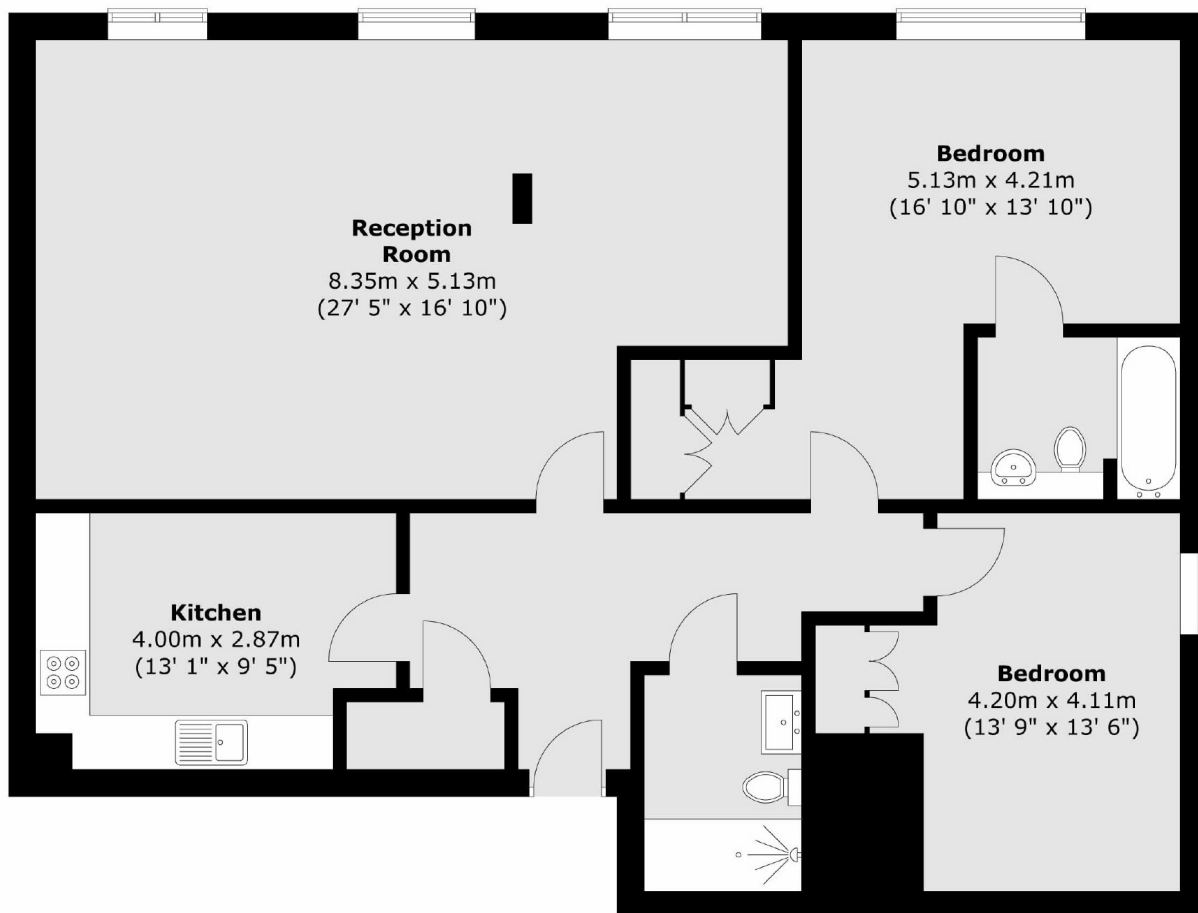
Located in the heart of Shad Thames, this two double bedroom flat is immaculately presented and boasts a large living space, modern kitchen, two bathrooms, ample storage, parking and is being sold chain free.

Tamarind Court is located only 0.6 miles from London Bridge station and is surrounded by a wide range of shops, restaurants, cafés and artisan delis.

### Features

- Two Double Bedrooms
- Two Bathrooms
- Excellent Condition
- Fantastic Location
- Parking Space
- Chain Free

# Gainsford Street, London, SE1



Total area (approx.) : 111.1 sq. m (1196 sq. ft)