



Pell Street, SE8

£634 Per week

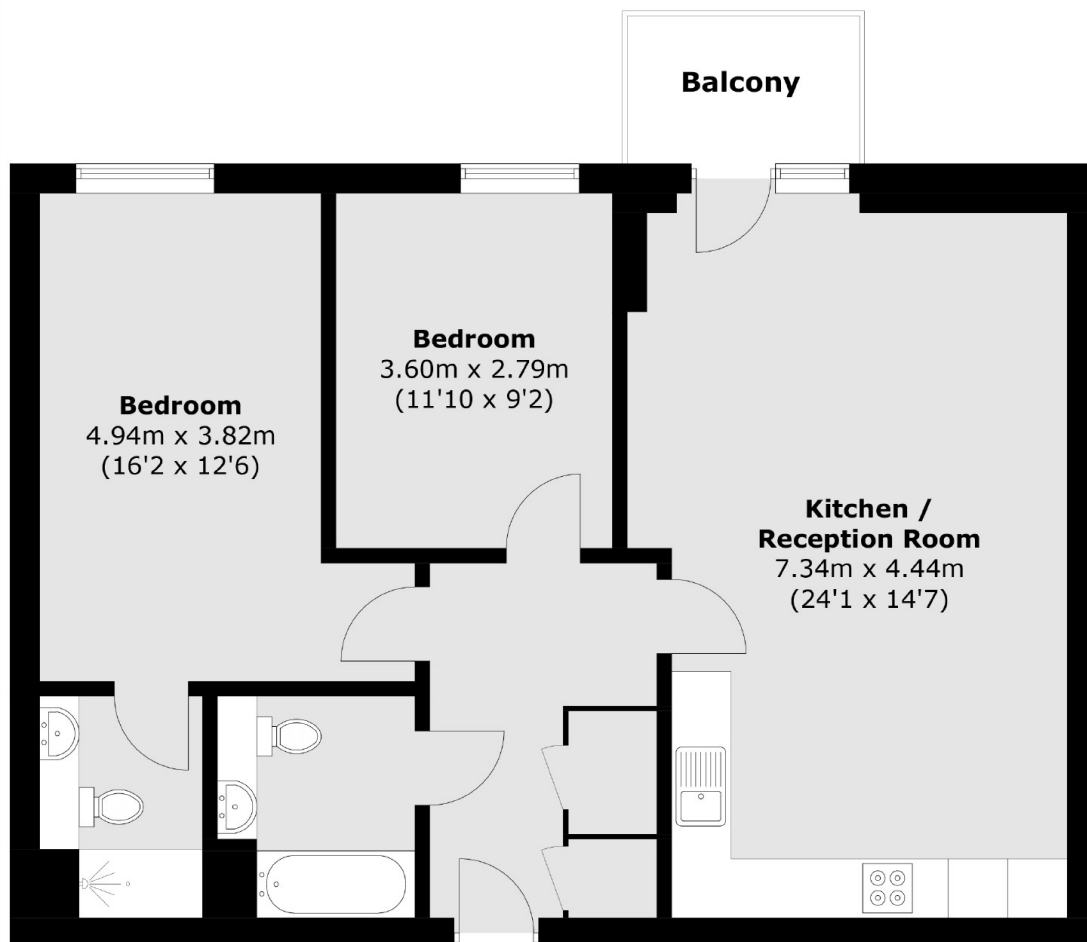
A two double bedroom, two bathroom property in a new build development in Surrey Quays. This property offers open plan kitchen/living, wood flooring throughout and private balcony. The development also offers 24hr concierge, on site gym and communal gardens.

Norlem Court is located in a new development in the heart of Surrey Quay. It includes a plethora of amenities like supermarkets, coffee shops, restaurants and hair dressers. Transport options include the underground and overground as well as numerous bus links

Features

- Two Bedroom
- Two Bathroom
- Balcony
- Concierge
- Gym
- Surrey Quays

Pell Street, London, SE8



Total area (approx.): 76.7 sq. m (825.5 sq. ft)
Balcony area: 3.5 sq. m (37.6 sq. ft)

Dexters

Tower Bridge
50 Shad Thames
London
SE1 2LY
Lettings
0207 650 5105

Energy Rating: B. We aim to make our particulars both accurate and reliable. However they are not guaranteed; nor do they form part of an offer or contract. If you require clarification on any points then please contact us, especially if you're traveling some distance to view. Please note that appliances and heating systems have not been tested and therefore no warranties can be given as to their good working order.

 **RICS** | Regulated
Estate Agent
and Letting Agent

[dexters.co.uk](https://www.dexters.co.uk)