



## George Row, SE16

### £400,000

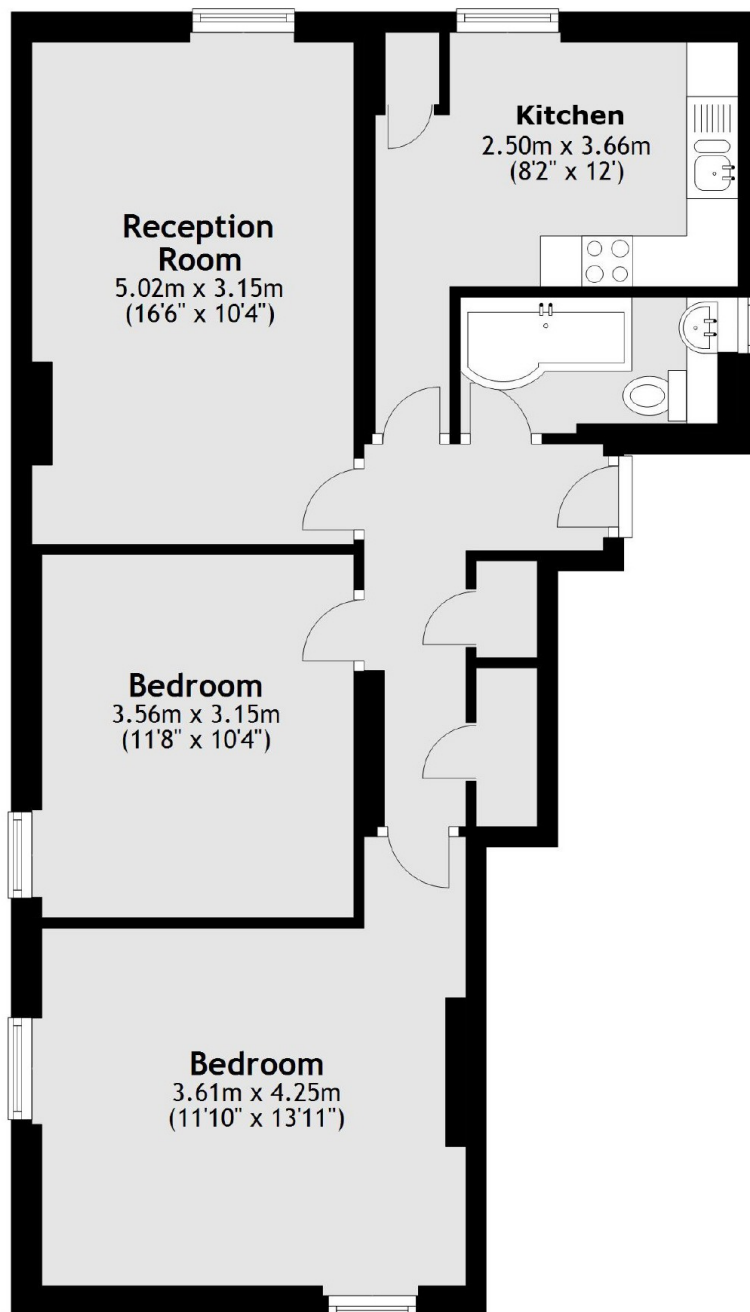
Situated on this quiet leafy street and moments from the river, this two double bedroom flat is in excellent condition and boasts a large living room, modern kitchen and bathroom and is being sold chain free.

Nickleby House is located only 0.2 miles from Bermondsey tube station and 0.6 miles from London Bridge. The development is surrounded by a wide range of shops, artisan food markets, restaurants and delis.

### Features

- Two Double Bedrooms
- Fantastic Location
- Light And Airy
- Chain Free
- Communal Gardens
- Ample Storage

# George Row, London, SE16



Total area: approx. 66.6 sq. metres (716.7 sq. feet)