



Mill Street, SE1

£450,000

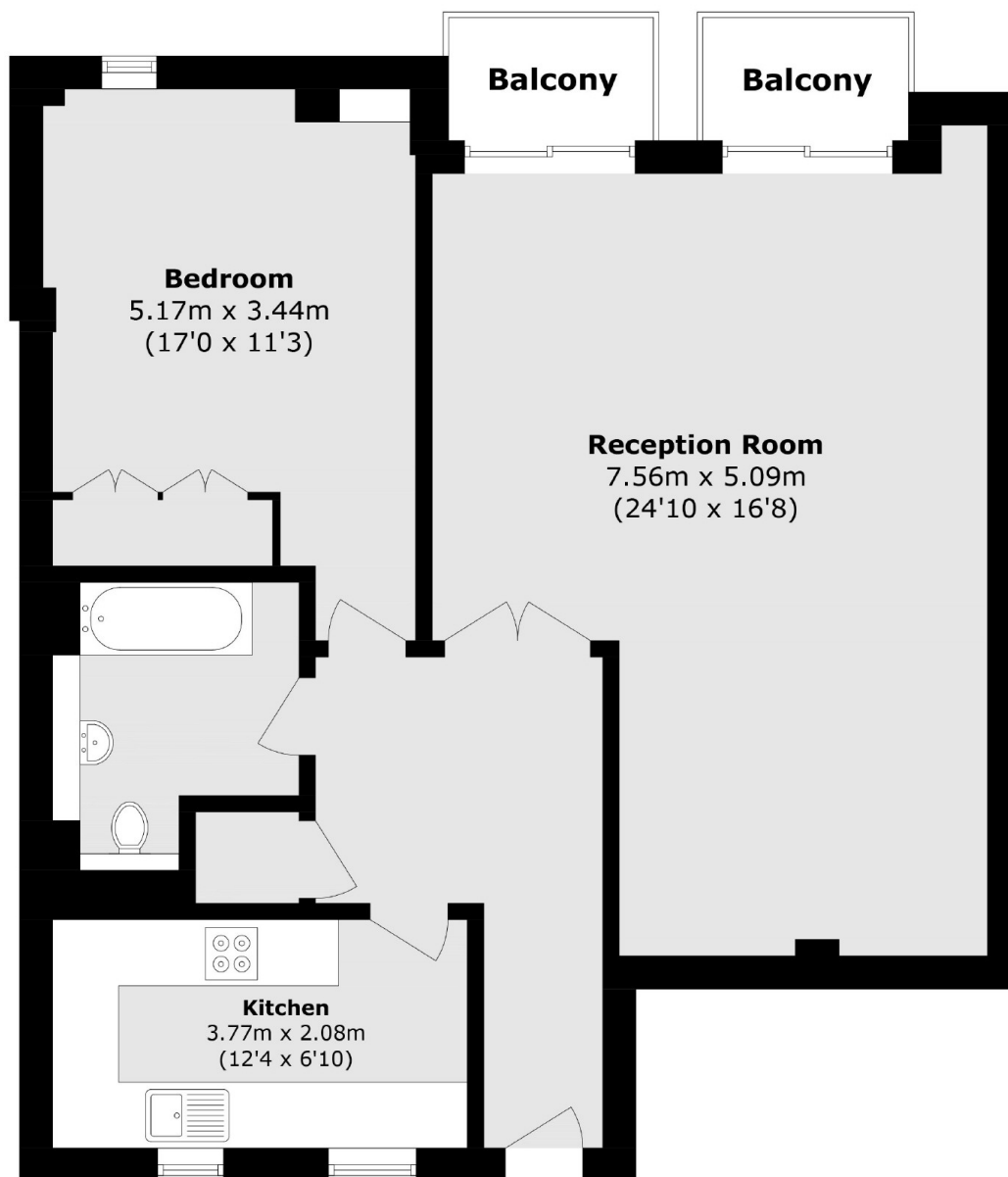
Situated in the heart of Shad Thames, this exceptionally large one double bedroom flat is immaculately presented throughout and boasts a large living space, recently renovated modern kitchen, private balcony, communal courtyard and concierge facilities with a private underground parking space.

Scotts Sufferance Wharf is located 0.4 miles from Bermondsey tube station and 0.5 miles from London Bridge. The Bridge theatre shops, cafés, riverside restaurants and delis of Shad Thames are moments away.

Features

- One Double Bedroom
- Private Balcony
- Communal Courtyard
- Chain Free
- Long Lease
- Share of Freehold
- Concierge Facilities
- Dedicated Underground Parking

Mill Street, London, SE1



Total area (approx.): 72.1 sq. m (776 sq. ft)
Balcony Total (approx.): 4.1 sq. m (44.1 sq. ft)