



## King & Queen Wharf, SE16

£577 Per week

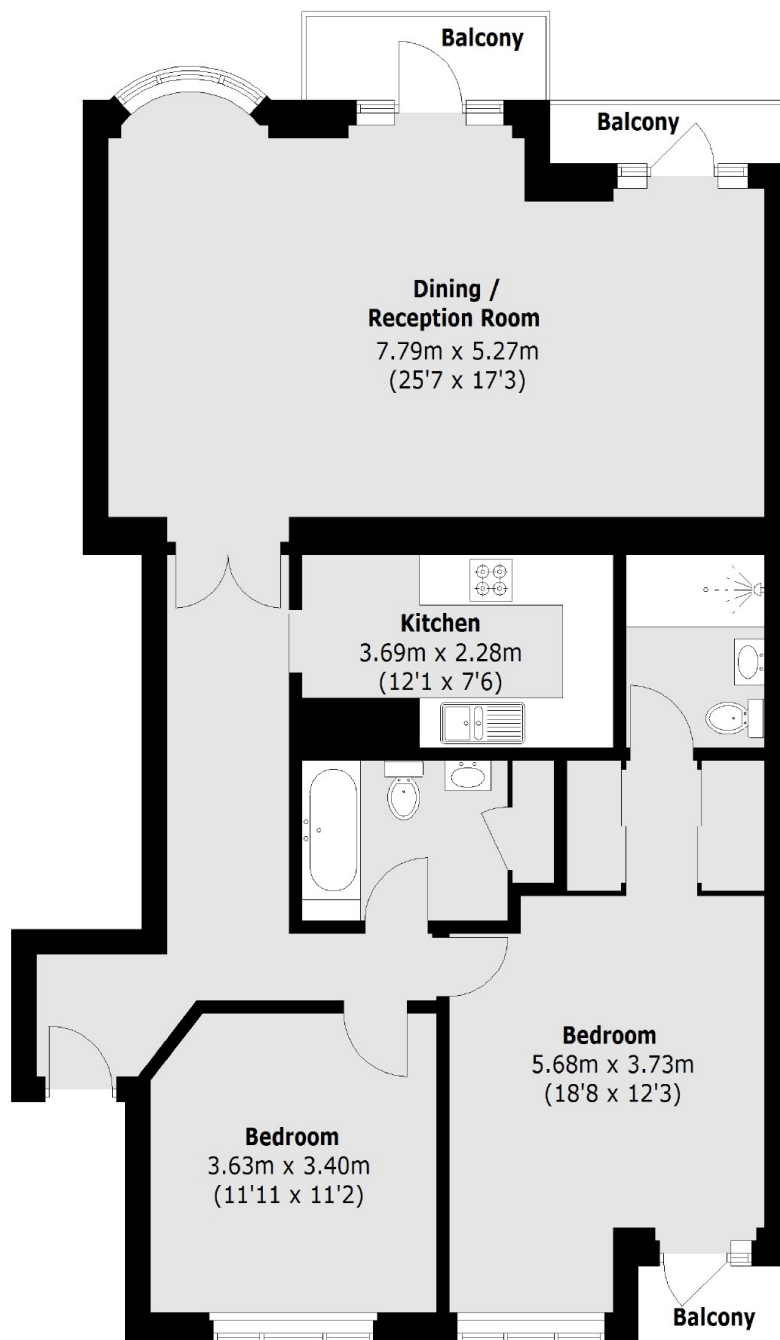
A spacious two double bedroom property in Rotherhithe. The property faces onto the river with stunning views, enjoyed from a large private balcony. There is 24 hour concierge, a swimming pool and the development is completely gated.

Hampton Court is a private development overlooking The River Thames. Surrey Quays Shopping Centre has numerous retail outlets, and there are good bus and underground links close by.

### Features

- Two Double Bedrooms
- Two Bathrooms
- Three Balconies
- Gym & Concierge
- River Views
- Rotherhithe

# King & Queen Wharf, London, SE16



Total area (approx.): 104.03 sq. m (1119.7 Sq. ft)

Balconies: 6.4 sq. m (68.8 Sq. ft)

## Dexters

Tower Bridge  
50 Shad Thames  
London  
SE1 2LY  
Lettings  
0207 650 5105

Energy Rating: C. We aim to make our particulars both accurate and reliable. However they are not guaranteed; nor do they form part of an offer or contract. If you require clarification on any points then please contact us, especially if you're traveling some distance to view. Please note that appliances and heating systems have not been tested and therefore no warranties can be given as to their good working order.

 **RICS** | Regulated  
Estate Agent  
and Letting Agent

[dexters.co.uk](https://www.dexters.co.uk)