



## Princes Court, SE16

**£2,750** Per calendar month

Offering stunning views of the river, this split level two bedroom two bathroom property boasts a large private roof terrace, modern kitchen and bathroom with parking.

Princes Court is located within easy commuting distance to Canary Wharf and The City. A wide range of shops, café's and restaurants are also moments away.

### Features

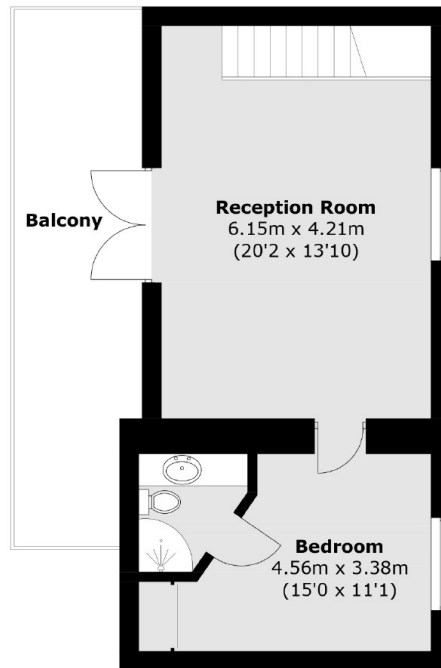
- Two Double Bedrooms
- Split Level
- Roof Terrace
- Parking Space
- Dock Views
- Riverside Location



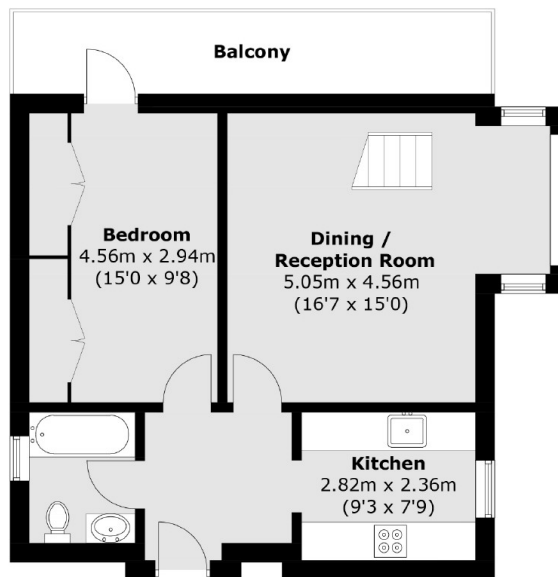
**Princes Court, SE16**



# Princes Court, London, SE16



**Fourth Floor**



**Third Floor**

Total area (approx.): 93.5 sq. m (1,006.4 sq. ft)  
Balcony: 25.7 sq. m (276.6 sq. ft)