



## Bailey Street, SE8

### £500,000

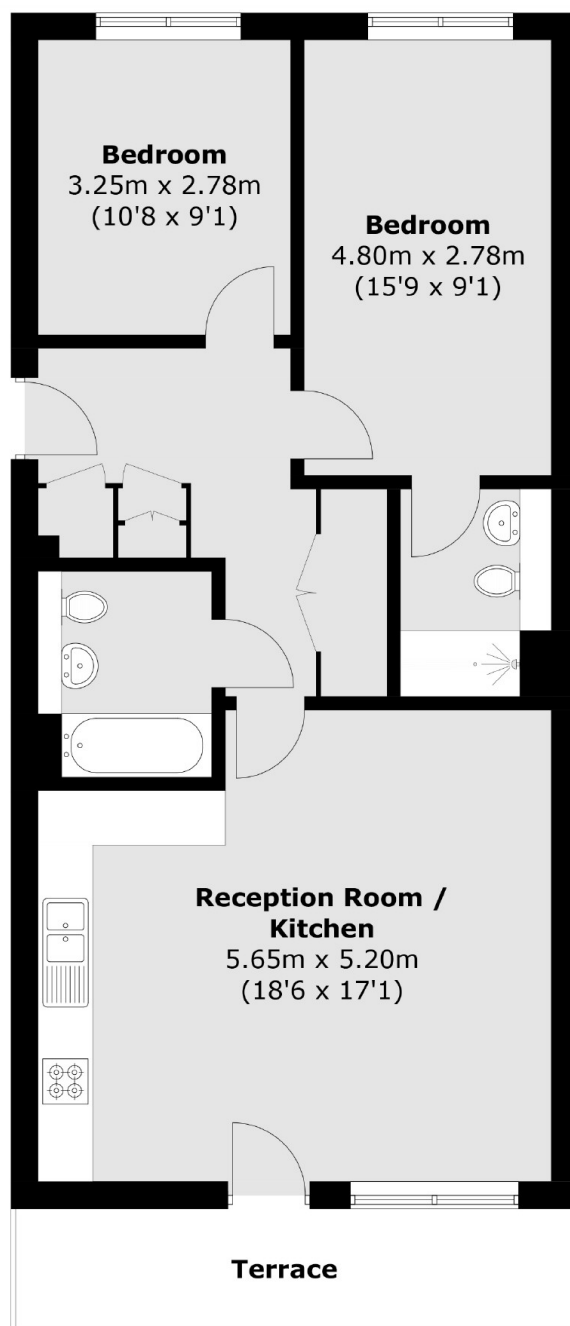
Located in this sought after development, this two double bedroom flat is immaculately presented and boasts two bathrooms, large open plan kitchen and living space, private terrace along with access to concierge facilities and an on-site gym.

Gothenburg Court is located within easy reach of the Jubilee Line and Overground and is surrounded by shops, cafés and restaurants. The river is also moments away.

### Features

- Two Double Bedroom
- Two Bathrooms
- Modern Development
- Concierge & Gym Facilities
- Long Lease
- Lift Access

# Bailey Street, London, SE8



Total area (approx.): 71.4 sq. m (768.5 sq. ft)  
Terrace area : 8.2 sq. m (88.3 sq. ft)

## Dexters

London Bridge  
54 Borough High Street  
London  
SE1 1XL  
Sales  
020 7650 5 100

Energy Rating: B. We aim to make our particulars both accurate and reliable. However they are not guaranteed; nor do they form part of an offer or contract. If you require clarification on any points then please contact us, especially if you're traveling some distance to view. Please note that appliances and heating systems have not been tested and therefore no warranties can be given as to their good working order.

 **RICS** | Regulated  
Estate Agent  
and Letting Agent

[dexters.co.uk](https://www.dexters.co.uk)