



Bray Crescent, SE16

£1,000,000

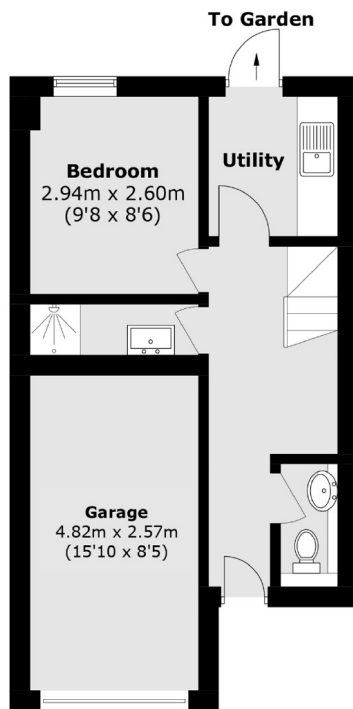
Arranged over three floors, and overlooking the water, this freehold house is immaculately presented offering four bedrooms, three bathrooms, utility room, modern kitchen, large reception room, parking and private garden.

Bray Crescent is conveniently located just 0.2 miles from Canada Water Station and 0.2 miles from Rotherhithe Street, offering fantastic transport links across London, as well as picturesque waterviews and riverside walks.

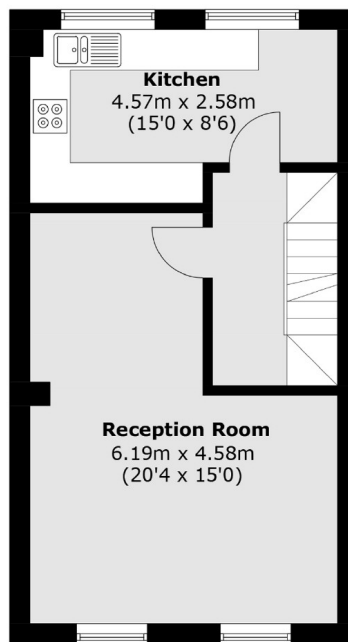
Features

- Four Bedrooms
- Three Bathrooms
- Freehold House
- Chain Free
- Fantastic Location
- Private Garden
- Waterviews

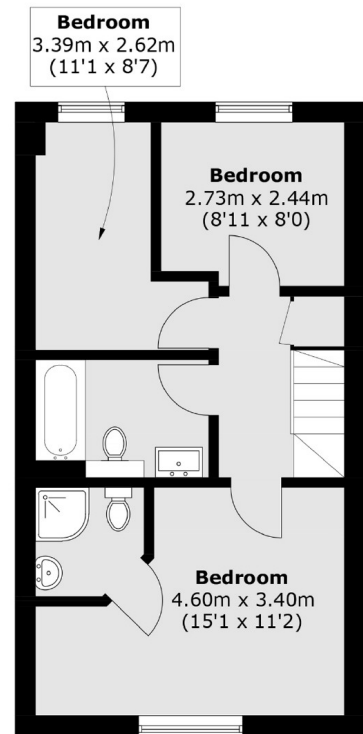
Bray Crescent, London, SE16



Ground Floor



First Floor



Second Floor

Total area (approx.): 105.7 sq. m (1137.6 sq. ft)
(Excluding Garage)
Garage area (approx.): 12.3 sq. m (132.3 sq. ft)