



St. Marychurch Street, SE16

£650,000

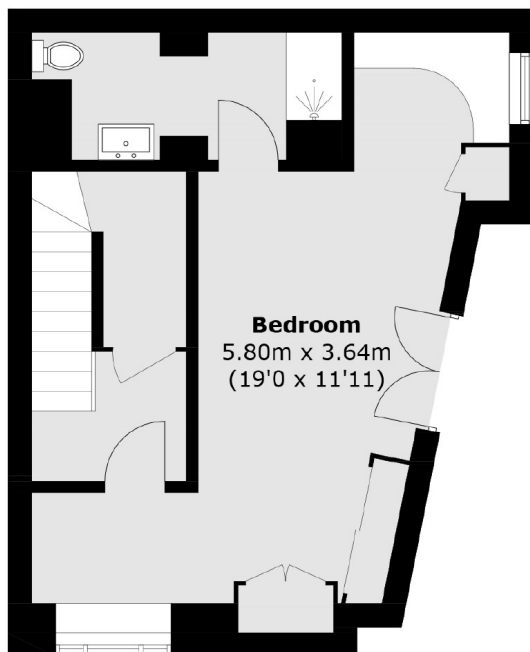
Arranged over two floors and moments from the river, this two double bedroom apartment offers a semi- open plan kitchen living space, two bathrooms, two balconies, ample storage, allocated parking and porter facilities.

Bombay Court is a secure gated development located only 0.2 miles from Rotherhithe Station, 0.3 miles from Canada Water station. The development is surrounded by shops, cafés and historic riverside eateries.

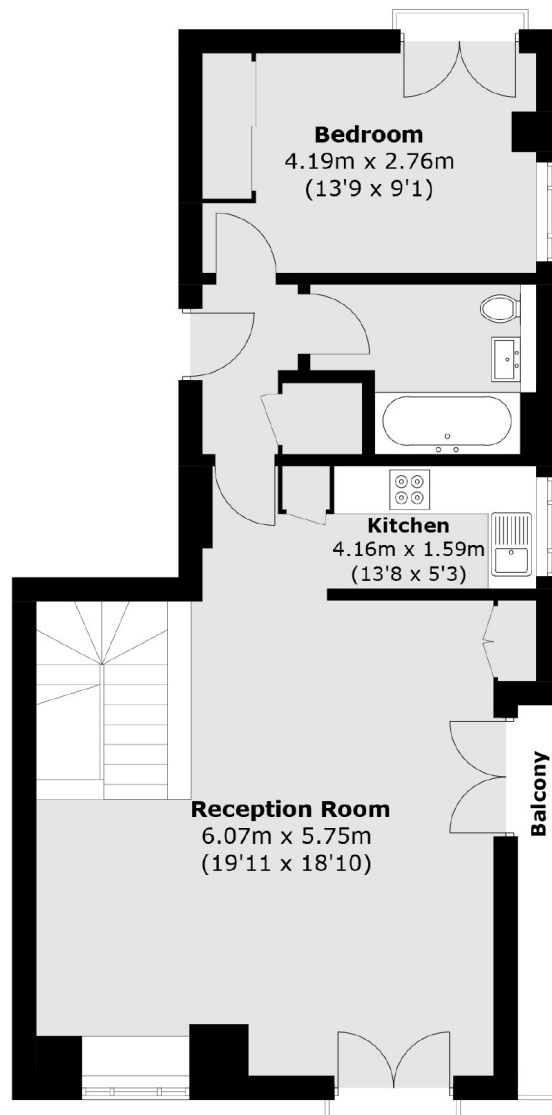
Features

- Two Double Bedrooms
- Two Bathrooms
- Excellent Condition
- Secure Allocated Parking
- Porter Facilities
- Fantastic Location

St. Marychurch Street, London, SE16



Ground Floor



First Floor

Total area (approx.): 103.6 sq. m (1,115.0 sq. ft)
Balcony: 2.3 sq. m (24.7 sq. ft)