



## Rotherhithe Street, SE16

### £395,000

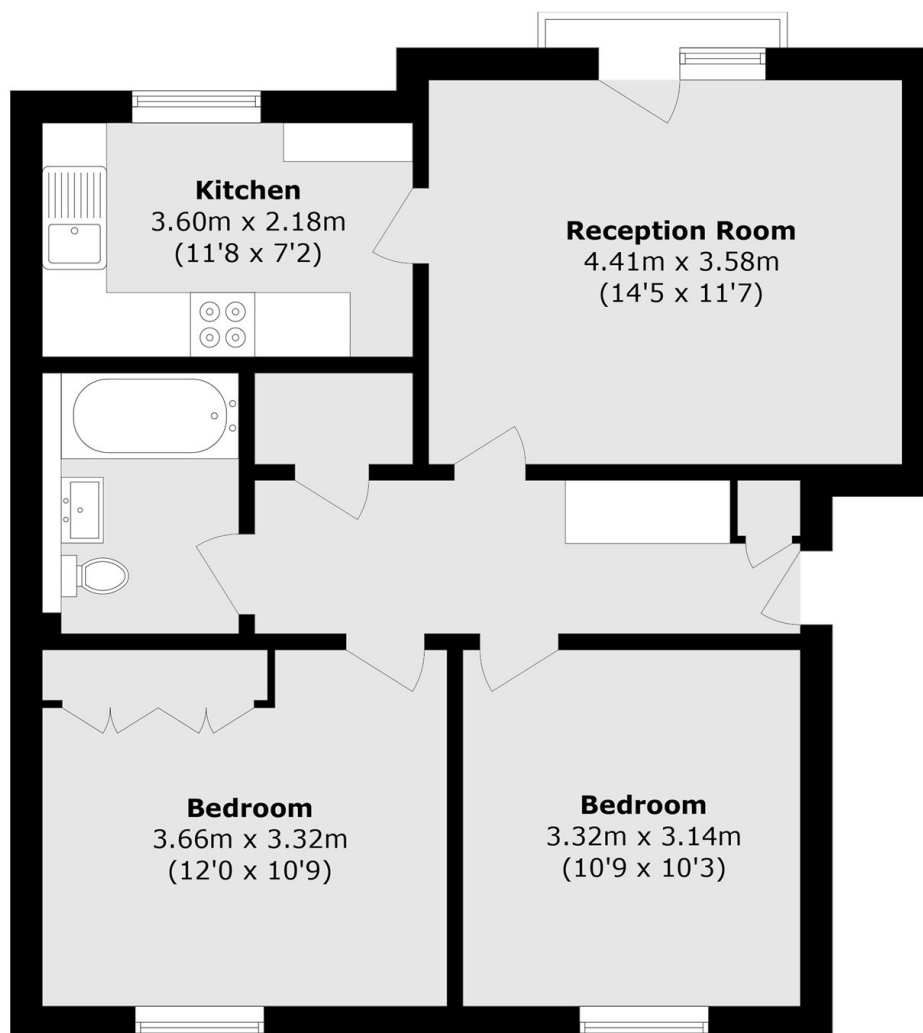
Situated within a secure development, this two bedroom flat is immaculately presented throughout and boasts a large living space, separate kitchen, new bathroom and a secure allocated parking space.

Located moments from the river, Tideway Court is 0.5 miles from Rotherhithe station and 0.6 miles from Canada Water station. An abundance of shops, cafés, restaurants and pubs are also close by.

### Features

- Two Bedrooms
- Allocated Parking Space
- Secure Entrance
- Fantastic Location
- Juliette Balcony
- Newly Extended Lease

# Rotherhithe Street, London, SE16



Total area (approx.): 62.9 sq. m (677.0 sq. ft)