



## St. Johns Estate, SE1

£489,000

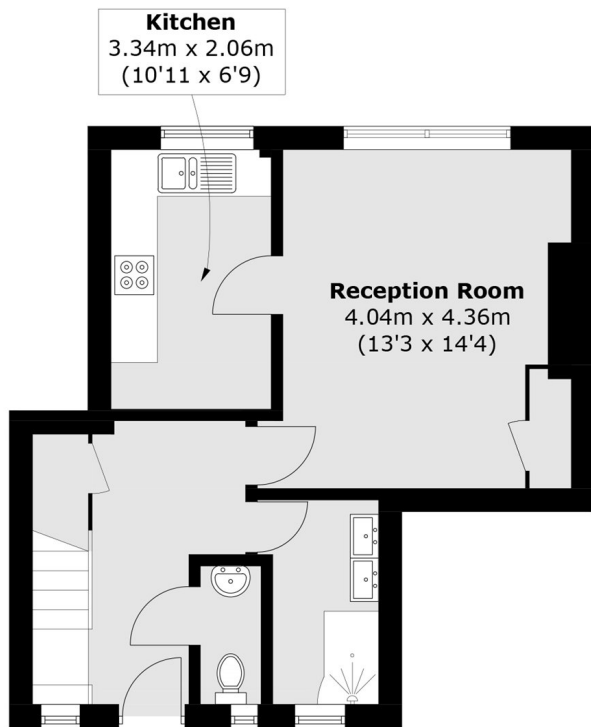
Situated moments from Tower Bridge, this bright and airy four double bedroom flat boasts a large living space, separate kitchen, ample storage and parking.

St Johns Estate is surrounded by excellent shops, cafés and restaurants with London Bridge station only 0.3 miles away offering fantastic transport links to all of London.

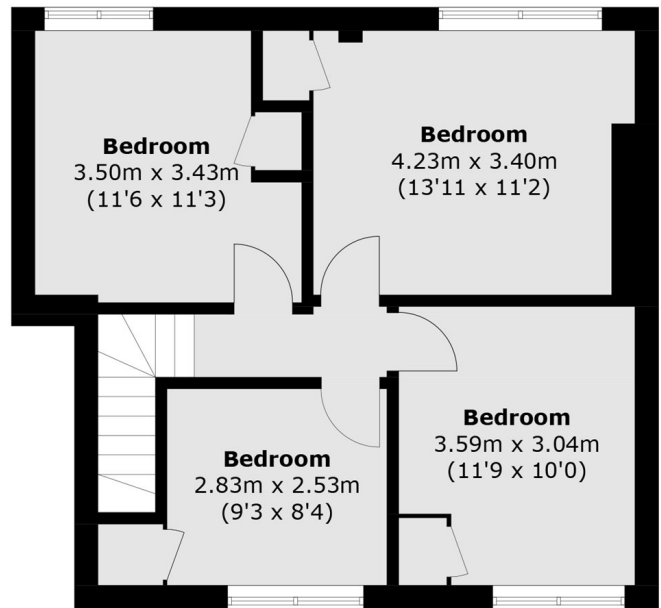
### Features

- Four Double Bedrooms
- Split Level
- Chain Free
- Quiet Development
- Fantastic Location
- Parking Available

# St. Johns Estate, London, SE1



**Second Floor**



**Third Floor**

Total area (approx.): 91.2 sq. m (981.7 sq. ft)