



## Maud Street, E16

### £350,000

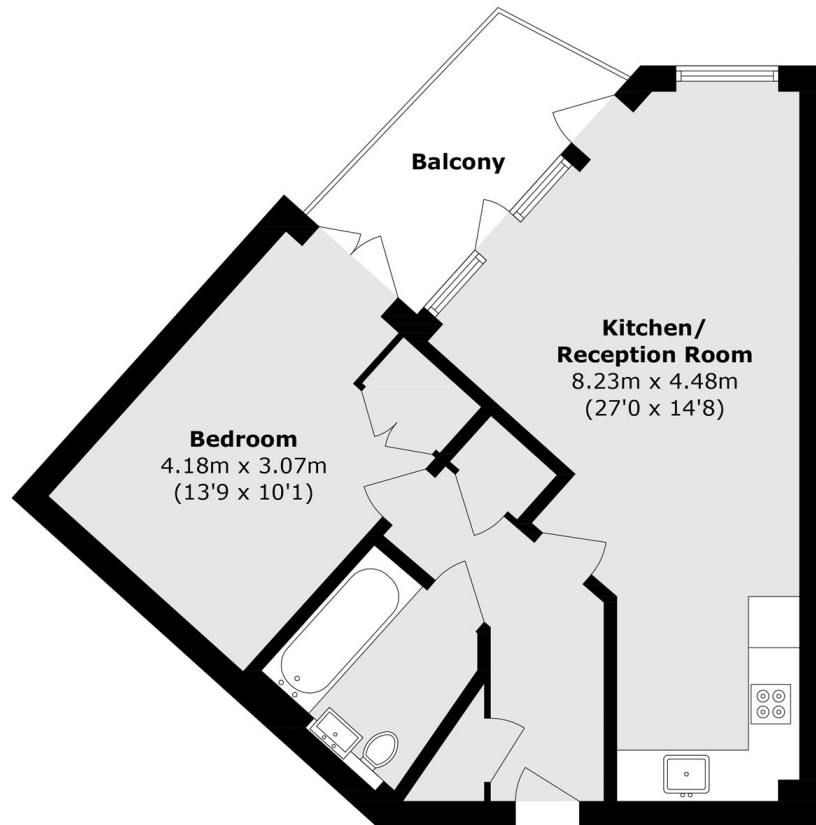
We are pleased to present this well-proportioned one-bedroom apartment, conveniently located close to Rathbone Market. Offering 532 sq ft of internal living space, the property features a private balcony, floor-to-ceiling windows, an open-plan reception room, and wooden flooring throughout.

Maud Street is conveniently located just 0.3 miles from Canning Town station, providing excellent transport links to Canary Wharf, the City, and beyond.

### Features

- Open Plan Living
- 532 Square Feet
- Natural Light
- Modern Specification
- Private Balcony
- Secure Development

# Maud Street, London, E16



## Third Floor

Total area (approx.): 49.4 sq. m (531.7 sq. ft)  
Balcony area (approx.): 6.1 sq. m (65.7 sq. ft)