



## Barrier Point Road, E16

£450,000

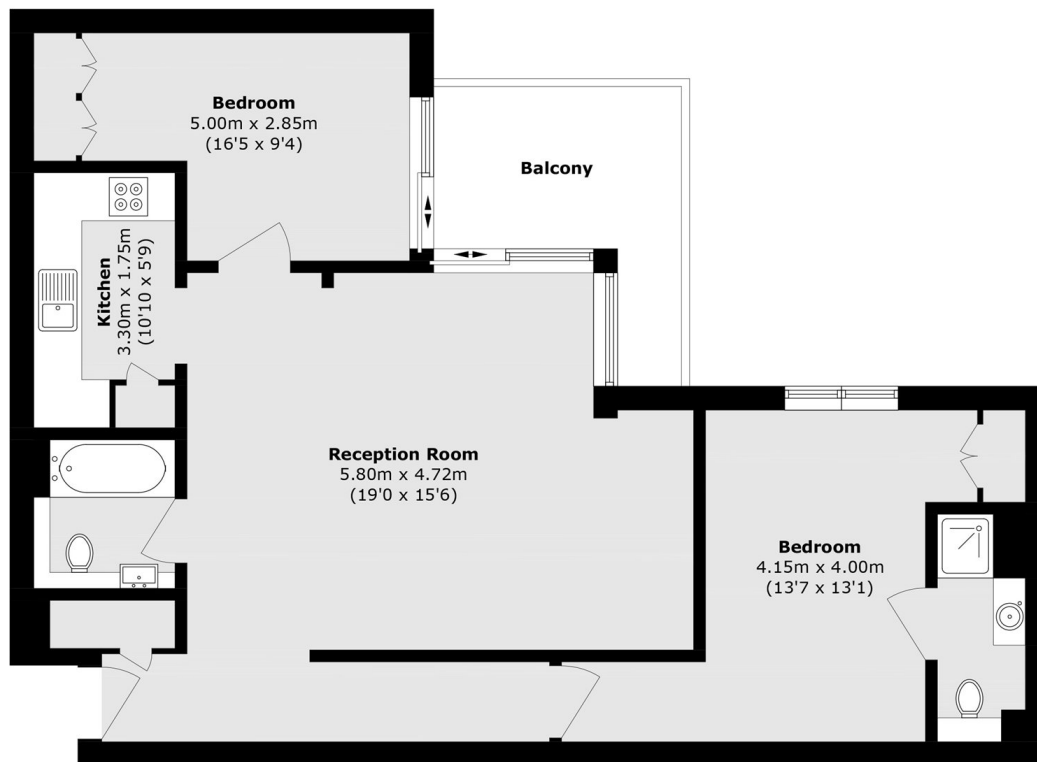
Positioned within a well-maintained modern development, this spacious two-bedroom apartment offers over 823 square feet of internal living space, along with a private balcony. The property features a generous reception room with ample space for both living and dining, a separate fitted kitchen, two double bedrooms and two bathrooms. Large windows throughout allow an abundance of natural light to fill the apartment. Residents also benefit from a concierge service, an on-site gym, secure entry, lift access and allocated parking.

The property is ideally located just 0.1 miles from Pontoon Dock DLR Station, providing quick and convenient access to Canary Wharf and London City Airport. Custom House Station is also within 0.6 miles, offering fast connections to the City and beyond via the Elizabeth line. A wide range of local amenities are nearby, including supermarkets, cafés, restaurants and everyday convenience stores.

### Features

- 823 Square Feet
- Allocated Parking
- Concierge Service
- Residents Gym
- Gated Development
- Private balcony

# Barrier Point Road, London, E16



## Third Floor

Total area (approx.): 76.5 sq. m (823.4 sq. ft)  
Balcony area (approx.): 7.5 sq. m (80.7 sq. ft)