




**Greystone Barn, Kempton Farm Barns, Kempton,
Lydbury North, SY7 0JG**

01588 638715

FOR SALE BY PRIVATE TREATY


1 reception
room


3 bedrooms


2 bath/shower
rooms

Guide Price: £395,000

Bishops Castle (4 miles) - Craven Arms (6 miles) - Ludlow (24 miles), Shrewsbury (26 miles)

GENERAL REMARKS

Greystone Barn forms part of an exciting courtyard conversion of 5 barns, set in a beautiful, rural setting with delightful views over surrounding fields and hills.

Principally built of stone and timber under slate roofs, this development will be completed to a high standard by well respected specialists in this field, Castillion Homes, who have a proven track record in providing bespoke, period homes.

LOCATION

The barns lie in the peaceful little hamlet of Kempton, which enjoys a tranquil yet accessible setting, with the majority of its dwellings being traditional and well established.

The B34385 is far enough away not to impact on the setting, yet provides access to the local centres of Bishops Castle (6 miles), Craven Arms (6 miles), Ludlow (24 miles) and Shrewsbury (26 miles). These towns have a full range of facilities and amenities, with the closest train station located at Craven Arms.

GREYSTONE BARN

Plans have been prepared which create a unique and individual home which will have underfloor heating, an enclosed good sized garden, 3 double bedrooms, en-suite and family bathroom, open plan dining kitchen, family lounge and cloaks/WC, private driveway parking and double garage.

SERVICES

Mains electricity and water will be connected. Drainage will be to a private treatment plant serving the development. Wood burning stove.

VIEWING

Strictly through the Agents: Halls, 43 Church Street, Bishops Castle, SY9 5DA. Telephone: 01588 638755.

KEMPTON FARM BARN

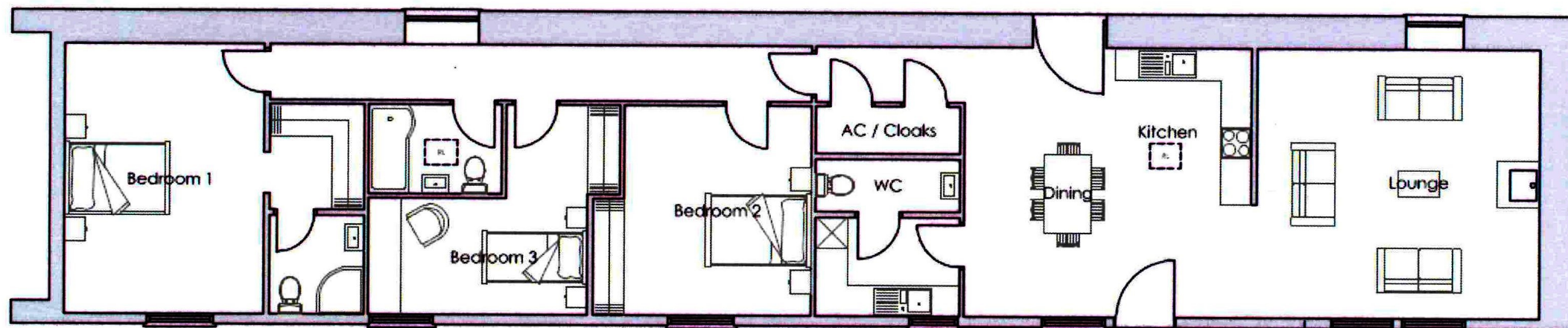
Greystone Barn is referred to as Unit 3 on the site plan and is the second home to be released on this select courtyard development. The other conversions comprising 1 bedroom to 4 bedroom homes, will become available as the project matures.

Please register your interest should you wish to be kept informed on the progress of these later units.

DIRECTIONS

From Bishops Castle proceed on the B4385 and on leaving Lydbury North continue for about 3 miles and turn right at second turn for Kempton and continue a short distance along this lane until you reach the development.





Unit 3
Ground Floor Plan

FOR SALE

Greystone Barn, Kempton Farm Barns, Kempton, Lydbury North, SY7 0JG



Property to sell? We would be delighted to provide you with a free no obligation market assessment of your existing property. Please contact your local Halls office to make an appointment. Mortgage/financial advice. We are able to recommend a completely independent financial advisor, who is authorised and regulated by the FSA. Details can be provided upon request. Do you require a surveyor? We are able to recommend a completely independent chartered surveyor. Details can be provided upon request.

Halls 1845

01588 638755

Bishops Castle Office:
43 Church Street, Bishops Castle, Shropshire, SY9 5AD
E: bishopscastle@hallsgb.com

IMPORTANT NOTICE. Halls Holdings Ltd and any joint agents for themselves, and for the Vendor of the property whose Agents they are, give notice that: (i) These particulars are produced in good faith, are set out as a general guide only and do not constitute any part of a contract (ii) No person in the employment of or any agent of or consultant to Halls Holdings has any authority to make or give any representation or warranty whatsoever in relation to this property (iii) Measurements, areas and distances are approximate, Floor plans and photographs are for guidance purposes only (photographs are taken with a wide angled / zoom lenses) and dimensions shapes and precise locations may differ (iv) It must not be assumed that the property has all the required planning or building regulation consents. Halls Holdings Ltd, Bowmen Way, Battlefield, Shrewsbury, SY4 3DR. Registered in England 06597073.

