



The Avon Plot 57 Corsham Rise
Corsham



The Avon
Plot 57 Corsham Rise
Corsham
SN13 9GU

• Cotsworld Homes • 4 Double Bedroom House • En Suite Facilities • Kitchen/Family/Dining Suite • High Specification • Integral Garage and Parking • HELP TO BUY AVAILABLE • Viewing Strongly Advised •

Asking Price £425,000



Description

The Avon Plot 57 at Corsham Rise is a Delightful New Community in this Semi Rural Location just a short distance from the town and its facilities. The Avon is a BAY FRONTED FOUR DOUBLE BEDROOM FAMILY HOME with large kitchen breakfast suite with cleverly positioned Velux windows with French doors leading to the garden. The kitchen is superbly equipped with built in SMEG appliances which include an oven, washer/dryer, dishwasher and fridge freezer. There is a dining/family suite and to the first floor, the master bedroom benefits from en-suite facilities and a Juliet balcony. There are fitted wardrobes to three of the bedrooms. The bathrooms have sleek sanitary ware and Porcelonosa tiling throughout. The property further benefits from GCH and double glazing. Externally there are front and rear gardens, the rear being turfed and fully enclosed. The property also has an integral garage and double block paved driveway for two cars. Help to buy enquiries are welcome.

Situation

Directions

From our Corsham office continue over Pickwick Road into Station Road and continue to the junction of Valley Road. Bear left and continue over the railway bridge into Potley Lane. Follow the road to the right and the development can be found on your left hand side.

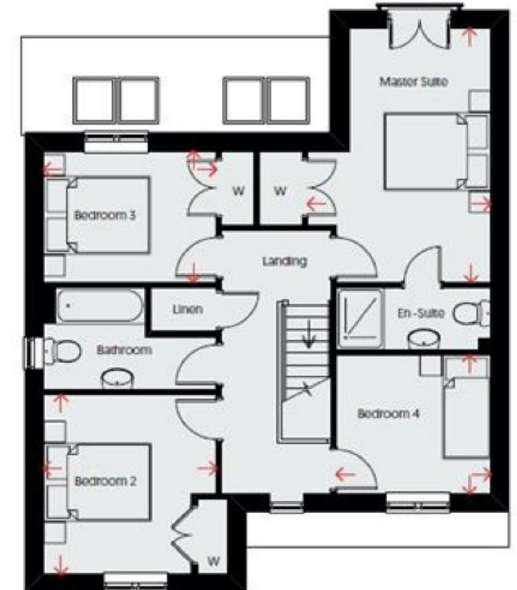
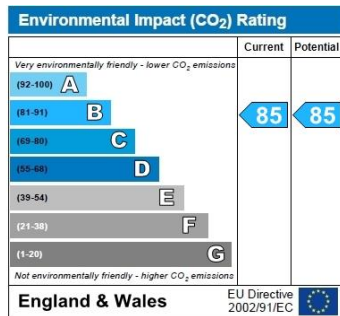
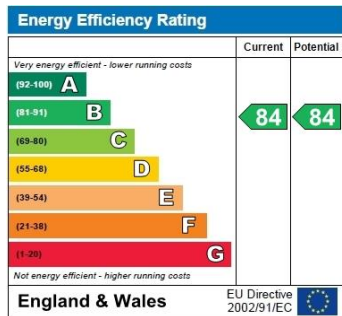
Services & Council Tax



These particulars, whilst believed to be accurate are set out as a general outline only for guidance and do not constitute any part of an offer or contract. Intending purchasers should not rely on them as statements of representations of fact, but must satisfy themselves by inspection or otherwise as to their accuracy. No person in this firm's employment has the authority to make or give any representation or warranty in respect of the property. All measurements and distances are approximate only.

Your home is at risk if you do not keep up repayments on a mortgage or other loan secured on it.





6 High Street, Corsham, Wiltshire, SN13 0HB
 Tel: 01249 712039
 Fax:
 Email: corsham@strakers.co.uk

strakers.co.uk

■ Chippenham
 ■ Corsham

■ Marlborough
 ■ Malmesbury

■ Royal Wootton Bassett
 ■ Devizes

■ Swindon
 ■ North Swindon