



8 Sweerie,
Newburgh KY14 6DL

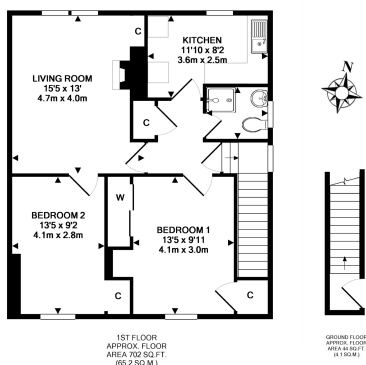
Offers Over £75,000

- Upper Flat
- 2 bedrooms

- Kitchen
- Lounge



Well-presented, bright and spacious upper flat in a block of four with lovely views towards the Tay. Entry via fully insulated double glazed front door to inner hallway with stair to apartment on upper level. Convenient cloaks area. Part glazed door to upper hallway which gives access to lounge / dining room, bedroom, kitchen and shower room. Deep storage cupboard and loft access. Spacious and bright lounge / dining room with feature fire-place currently housing a coal effect electric fire. Shelved alcove with cupboard underneath. Lovely views over greenery to the Tay Estuary and beyond. Coving and dado rail. Fitted kitchen comprising base and wall mounted units, worktop and sink with side drainer. Space for white goods washing machine and fridge freezer which are included in the sale price. Wet wall to splash-back with easy clean, tile effect linoleum flooring. Logic 24 Combi central heating boiler. Views. Double bedroom with large shelved storage cupboard, inset drawer unit, additional shelving and double fitted wardrobe offering shelving and hanging space. Pleasant outlook over the gardens of Sweerie towards Woodriffe. Second double bedroom also to the rear of the property with shelved storage. EPC: C



Thorntons is a trading name of Thorntons LLP. Note: While Thorntons make every effort to ensure that all particulars are correct, no guarantee is given and any potential purchasers should satisfy themselves as to the accuracy of all information. Floor plans or maps reproduced within this schedule are not to scale, and are designed to be indicative only of the layout and location of the property advertised.

T: 03330 430090 | E: genea@thorntons-law.co.uk | www.thorntons-property.co.uk

Dundee | Anstruther | Arbroath | Cupar | Edinburgh | Forfar | Kirkcaldy | Montrose | Perth | St Andrews

