

# Whites

ESTATE AGENTS

339 Wellingborough Road  
Northampton NN1 4ER

Telephone: 01604 233600  
Facsimile: 01604 233445  
[www.whitesestateagents.co.uk](http://www.whitesestateagents.co.uk)

NATIONAL ASSOCIATION  
NAEA  
ESTATE AGENTS



## 27 Turner Street Northampton NN1 4JJ



**PRICE: £134,995 Freehold**

Exceptional value! A charming Victorian character house with loads of feature fireplaces, picture rails and stripped wood flooring. Located on this popular road in Abington with access to the Wellingborough Road and Kettering Road with all the wealth of a variety of shops, pubs, restaurants and parks. The house itself has a 22ft through lounge/dining room, kitchen with butler style sink and fashionable decor. Upstairs there are three bedrooms and a family bathroom. The house has a rear garden and also benefits from gas radiators.

All statements written in these particulars as to this property are made without responsibility on the part of Whites and do not constitute any part of an offer or contract. Purchasers should not rely on them as statements of fact. Measurements are for guidance only and equipment described has not been tested.

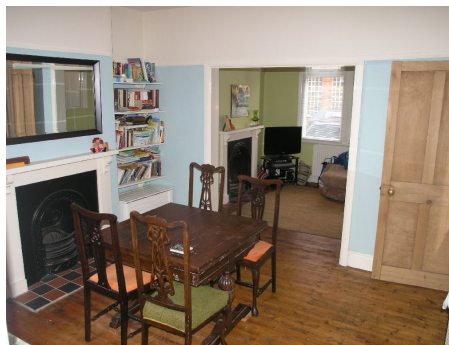
## ACCOMMODATION DETAILS.

### GROUND FLOOR

**ENTER VIA:** Timber door with obscured glazed window into;

**HALLWAY:** Single panel radiator, wall mounted thermostat, stripped floorboards, stairs to first floor, doors to:

**LOUNGE/  
DINING ROOM:** **22'9x11'4** (6.93m x 3.45m). Window to front aspect, stripped floorboards, feature fireplace with tiled hearth and wooden surround, double panel radiator. Dining room widens to 11'11 (3.63m), feature fireplace with tiled hearth, stripped floorboards, double panel radiator, window to rear aspect, stripped door to:



**KITCHEN:** **13'7x8'2** (4.14m x 2.49m). A range of painted wood base and eye level units with attractive plate rack, butler style sink with mixer tap over, tiled flooring, window to side aspect, gas hob with electric oven below, plumbing for a washing machine, space for a fridge/freezer, inset spotlights, door to cellar and utility room:



**UTILITY AREA:** Plumbing for automatic washing machine, wall mounted boiler, door to garden

**CELLAR:** With power and light, housing electric and gas meters and electric consumer unit.

All statements written in these particulars as to this property are made without responsibility on the part of Whites and do not constitute any part of an offer or contract. Purchasers should not rely on them as statements of fact. Measurements are for guidance only and equipment described has not been tested.

## FIRST FLOOR

**LANDING:** Loft access, doors to:

**BEDROOM 1:** **14'10x10'11** (4.52m x 3.33m). Window to front aspect, feature fireplace with wooden surround, stripped floorboards, double panel radiator, alcove cupboard with stripped door.



**BEDROOM 2:** **11'x9'4** (3.35m x 2.84m). Window to rear aspect, feature fireplace with tiled hearth, stripped floorboards, double panel radiator, alcove cupboard with stripped door.

**BEDROOM 3:** **8'3x6'5** (2.51m x 1.96m). Window to rear aspect, stripped floorboards, double panel radiator.

**BATHROOM:** Comprising white three piece suite with wood panelled bath with shower over, low level WC, pedestal mounted hand wash basin, single panel radiator, window to side aspect, laminate flooring, tiled to full height.



## OUTSIDE

**REAR GARDEN:** Mainly laid to lawn with patio and raised brick wall.



**VIEWING ARRANGEMENTS:** By appointment with Whites Estate Agents.

All statements written in these particulars as to this property are made without responsibility on the part of Whites and do not constitute any part of an offer or contract. Purchasers should not rely on them as statements of fact. Measurements are for guidance only and equipment described has not been tested.