



PUTTERILLS

est. 1992

Ewington, 31 Turpins Chase, Oaklands, Welwyn, AL6 0RP

Price £975,000

Immaculately presented 5 bedroom detached family home in a private leafy turning

This immaculately presented DETACHED CONTEMPORARY STYLE 5 BEDROOM FAMILY HOME is situated on a mature plot in a private leafy turning, within easy reach of local shops and transport links. The accommodation benefits from gas heating to radiators and double glazing throughout and comprises: deep entrance hall with galleried landing above, cloakroom, bright living room with log burner, snug, study/playroom, kitchen/breakfast room and utility room. Upstairs, all of the bedrooms are double in size, two with en-suite bathrooms plus a family bathroom. Outside are well maintained mature front & rear gardens with a good degree of privacy, an insulated workshop, double garage & driveway parking for several cars. EER- E

The area of Oaklands is situated just north east of Welwyn village & enjoys a number of private residential turnings, some wonderful borders onto woodland & access to fine country walks. The area boasts a junior/mixed infant school and a parade of shops that includes a sub post office, general convenience store, flower shop & butcher. Just over a mile away is the picturesque village of Welwyn which is steeped in history & located on the banks of the river Mimram. Some great pubs & good restaurants can be found here, along with an ancient ford, the Old Roman Baths & an independent baker.

Welwyn Garden City is approximately 4 miles south & has a number of leisure facilities, large shopping centre & a John Lewis department store.

The area has excellent public transport rail links in the nearby villages of Knebworth & Digswell which are approximately a 5 minutes car journey away.

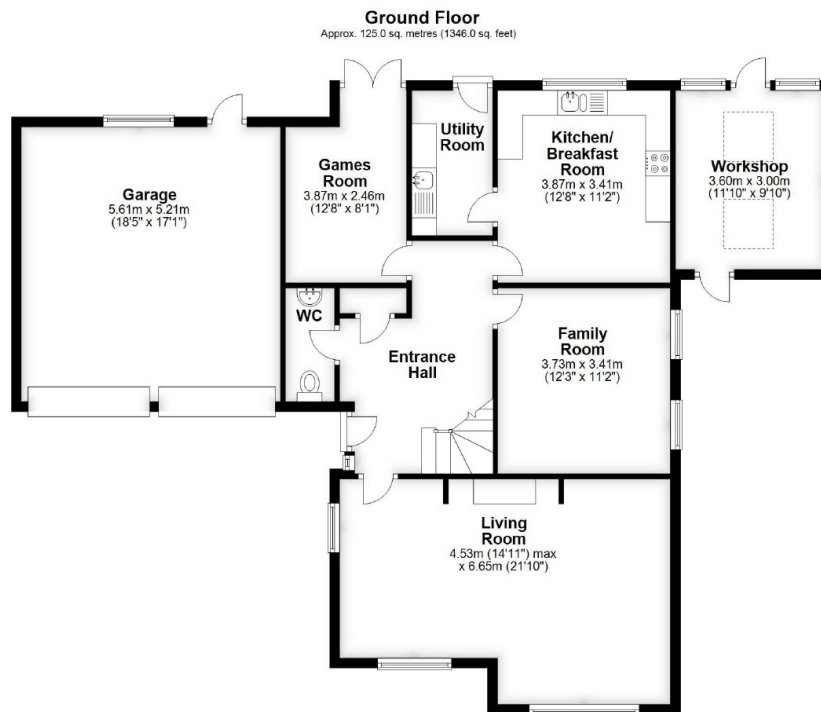












Total area: approx. 239.8 sq. metres (2581.6 sq. feet)