



PUTTERILLS

— est. 1992 —

2 Homeleigh Cottages, Whempstead, SG12 0PL
Offers in excess of £820,000

Breathtaking open vistas and a fine rural setting.

This beautifully presented and skilfully enlarged semi-detached house has striking Gothic style elevations and boasts the most stunning COUNTRYSIDE BORDERS WITH AMAZING OPEN VIEWS! The sizeable accommodation has a subtle blend of modern and traditional styles to include a fabulous bespoke kitchen/family room with under floor heating, vaulted glass roof and bi fold doors taking the full length of two walls. Approached via a deep entrance hall with Oak staircase, the property provides: Cloakroom, sitting room with contemporary log burner, sizeable dining room, laundry room, boot room, 4 double bedrooms, 2 further attic rooms, equipped dressing room, luxurious bathroom with 4 piece suite and an en-suite shower room. The house has double glazed windows along with Calor gas heating to radiators, and boasts a fabulous plot with slate terrace and plate glass balustrade, large workshop with light and power, Gazebo with deck and part sunken carp pool and pump house. There is an integral single garage and private driveway for 4 + cars. Scope exists for further enlargement if required, subject of course to obtaining all the necessary planning consents. EER: F

Whempstead is a rural Hamlet surrounded by rolling countryside and rests just outside the slightly larger village of Benington - where you can find two pubs, two churches, a small primary school, village hall & recreation ground - and of course the impressive Benington Lordship estate and gardens. Stevenage and Hertford, both provide a comprehensive range of shops, retail parks and leisure facilities and mainline rail links.





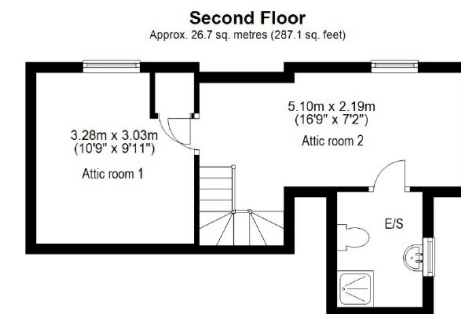
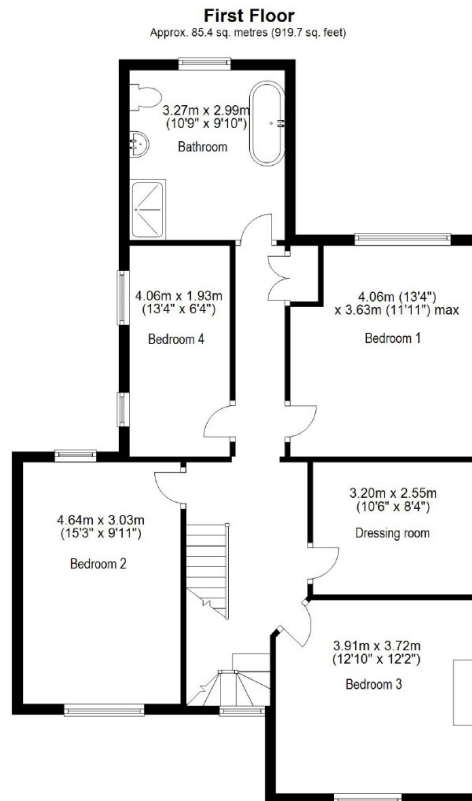
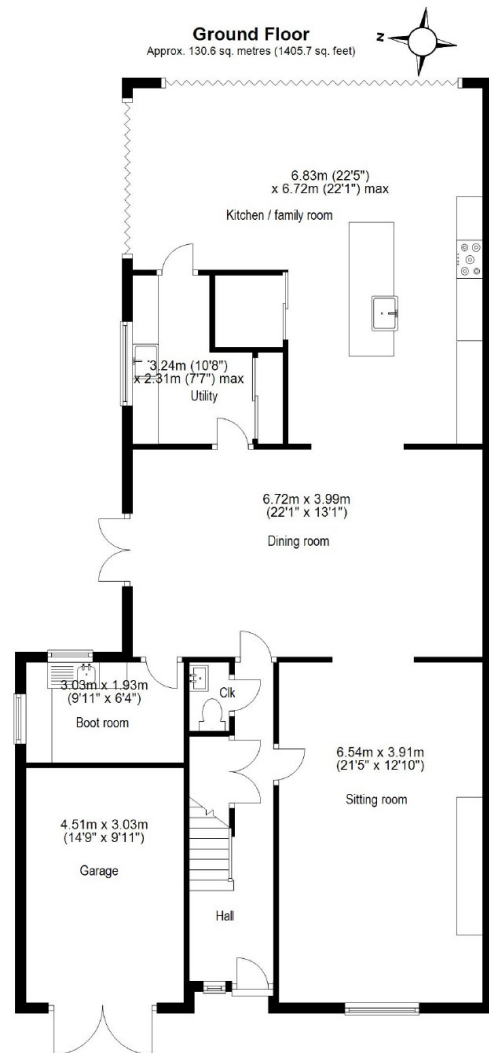


Undulating views to the rear









Total area: approx. 242.7 sq. metres (2612.5 sq. feet)

Includes garage area
Plan produced using PlanUp.