



PUTTERILLS

EST. 1992

11 Pembridge Gardens, Bragbury End, SG2 8BF
Price £300,000

Modern 2 double bedroom house in lovely gated development

This modern and well presented mid row 2 double bedroom house was built circa 2008 by the reputable 'Charles Church' and is situated towards the head of a popular gated cul-de-sac. With reserved parking along with a private rear garden, the tastefully presented accommodation comprises: Entrance hall, cloakroom, fitted kitchen/dining room with patio doors to the garden, bright and spacious lounge, modern white bathroom, gas heating and double glazing. OFFERED CHAIN FREE EER: C

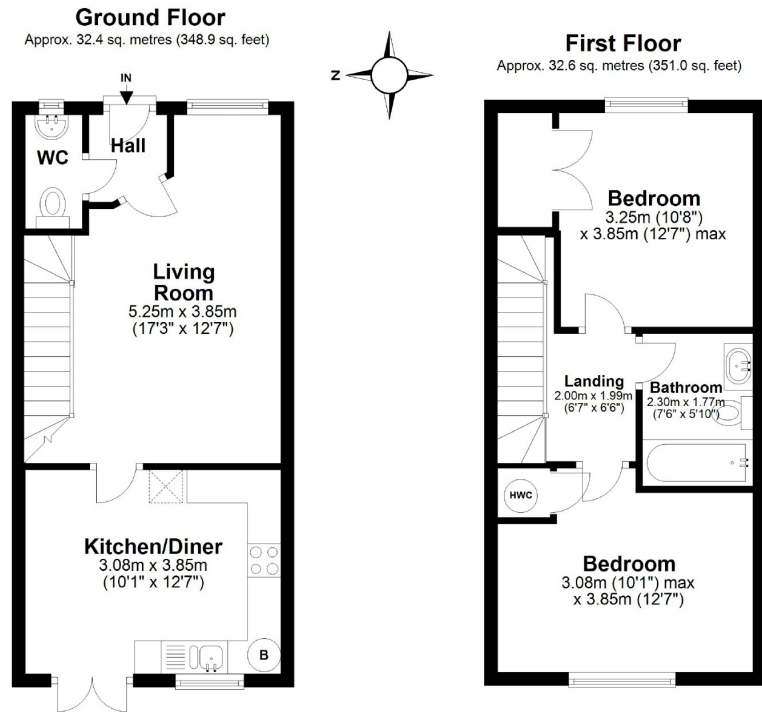
Bragbury End is situated just 1.4 miles to the east of Knebworth village which in turn provides a British Rail Mainline station with direct to London's Kings Cross (22 35 minutes). Hitchin, Welwyn Garden City, St Albans and the County Town of Hertford are within a short drive and all provide extensive schooling, shopping and leisure facilities.











Total area: approx. 65.0 sq. metres (699.9 sq. feet)

Whilst every attempt has been made to ensure the accuracy of this floor plan, no responsibility is taken for any error, omission or incorrect statement. When a garage outbuilding, garden and/or balcony are shown on the floor plan, their areas are included in the floor square area. The plan is for illustrative purposes and is to be used as such by any prospective purchaser or tenant.

Floor Plan prepared by Adrian Bunting 07753375565.
Plan produced using PlanUp.