



PUTTERILLS

est. 1992

6 Rosanne House, Bridge Road, Welwyn Garden City, AL8 6DE

Guide price £585,000

TWO BEDROOM GROUND FLOOR APARTMENT SET WITHIN THE HEART OF THE GARDEN CITY WITH UNDERGROUND PARKING

A rare opportunity to purchase a GROUND FLOOR two bedroom apartment situated within the prestigious Rosanne House development set in the heart of Garden City town centre. The property benefits from neutral and very well kept accommodation throughout comprising entrance hall, spacious open plan living room with full length sash windows, attractive fitted kitchen with appliances, large master bedroom with en suite shower room, fitted wardrobes, a further bedroom and a modern bathroom. There is secure underground parking as well as visitor parking bays to the front and lifts to all floors.

THE AREA: Situated in a highly sought after West Side location in the heart of Welwyn Garden City town centre, which offers a wide range of amenities and shops including John Lewis, Waitrose and Marks & Spencer. Also in the town centre is a mainline railway station with fast and frequent services into London Kings Cross and Moorgate. Providing good transport links via road is the A1(M) which is within easy access. Renowned local schooling, local sports clubs and The Campus West for theatre, cinema and library are all within walking distance.

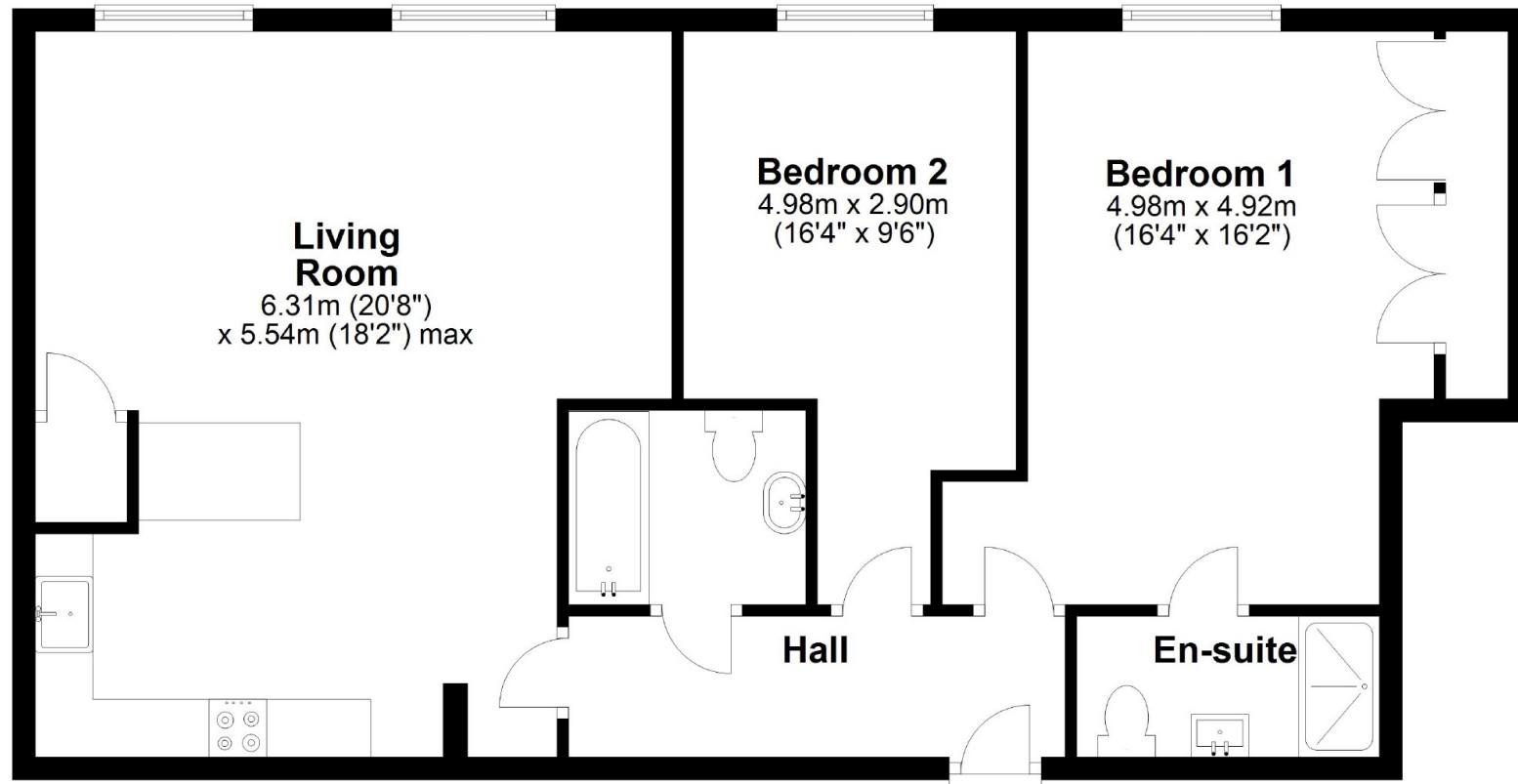






Ground Floor

Approx. 77.3 sq. metres (832.4 sq. feet)



Total area: approx. 77.3 sq. metres (832.4 sq. feet)



PUTTERILLS

est. 1992

putterills.co.uk | 01707 393333 | wgc@putterills.co.uk

You may download, store and use the material for your own personal use and research. You may not republish, retransmit, redistribute or otherwise make the material available to any party or make the same available on any website, online service or bulletin board of your own or of any other party or make the same available in hard copy or in any other media without the website owner's express prior written consent. The website owner's copyright must remain on all reproductions of material taken from this website.