



PUTTERILLS

est. 1992

25 North Road, Old Town, Stevenage, SG1 4BD
£550,000

STUNNING FOUR BEDROOM DETACHED PERIOD HOME ENJOYING A HIGHLY SOUGHT-AFTER CONVENIENT LOCATION WHILST BOASTING AN ABUNDANCE OF FINE PERIOD FEATURES WITH THE PRACTICAL ADVANCE OF A DRIVEWAY AND GARAGE.

* BE SURE TO VIEW OUR FULLY IMMERSIVE 3D VIRTUAL TOUR *

A most attractive four bedroom detached period cottage occupying a private secluded plot conveniently situated within a short level walk of the historic High Street and mainline railway station beyond with direct fast trains to London Kings Cross within approximately 23 minutes.

Dating back to the 1870s, this deceptively spacious cottage sits behind an attractive rendered front elevation adorned with mature climbing roses with timber leaded light windows helping to create immense kerb appeal for this charming character home.

The interior has been designed and finished with calming neutral tones helping to showcase the many fine period features including inglenook fireplaces and a wealth of exposed timbers.

The accommodation comprises an impressive wide welcoming reception hallway, a stunning open-plan lounge/dining room with an inglenook fireplace, family room with further inglenook, rear lobby leading to a farmhouse style kitchen and the practical advantage of a downstairs cloakroom/wc. The generous first floor landing provides access to four spacious bedrooms, three of which are well proportioned double rooms and a generous family bathroom. The property combines leaded light timber framed windows to the front elevation with a number of replacement windows to the rear with the practical advantage of a spacious garage, driveway for two vehicles and two outside stores whilst the rear garden is a further highlight of the property extending to both the rear and side of the garden offering an excellent degree of privacy.

Viewing is highly recommended to fully appreciate the size, flexibility and character this period home has to be offer.



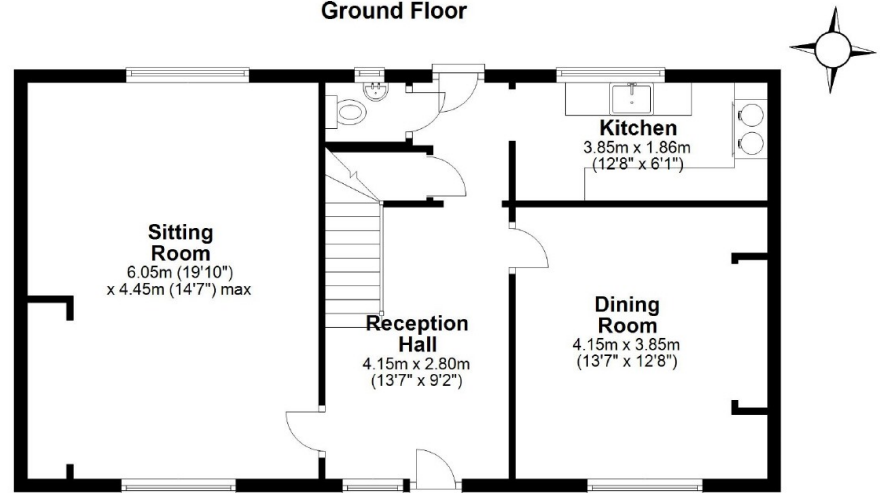




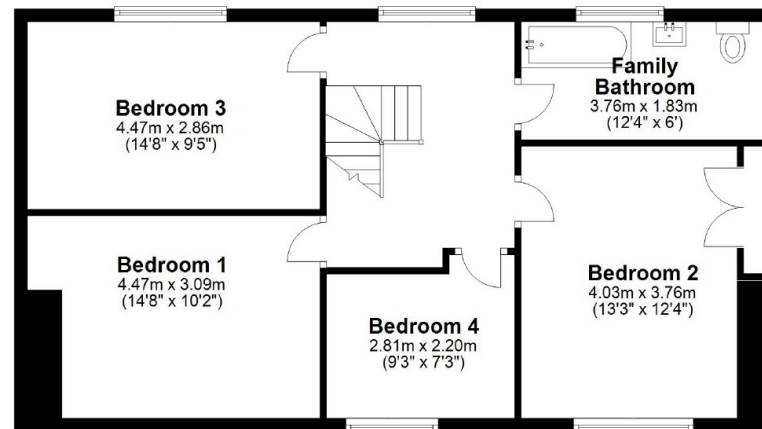




Ground Floor



First Floor



Total area: approx. 136.1 sq. metres (1464.9 sq. feet)



PUTTERILLS

est. 1992

putterills.co.uk | 01438 316846 | oldtown@putterills.co.uk

You may download, store and use the material for your own personal use and research. You may not republish, retransmit, redistribute or otherwise make the material available to any party or make the same available on any website, online service or bulletin board of your own or of any other party or make the same available in hard copy or in any other media without the website owner's express prior written consent. The website owner's copyright must remain on all reproductions of material taken from this website.