

jordan fishwick

Estate Agents, Lettings and Management



Phoenix, Piccadilly East, M1 2BQ

Prices from £195,000

Jordan Fishwick are pleased to be working alongside Capital&Centric, Manchester's most innovative developer.

PHOENIX are the first Capital & Centric homes in Manchester's new Piccadilly East neighbourhood. Floor-to-ceiling windows, exposed steel & concrete features and modern design-led interiors - and we're giving owner-occupier (that's you) first dibs on these awesome apartments!

The Development

Capital & Centric apartments are no average white box, they're designed for real people and a real community that we're building in the emerging Piccadilly East neighbourhood.

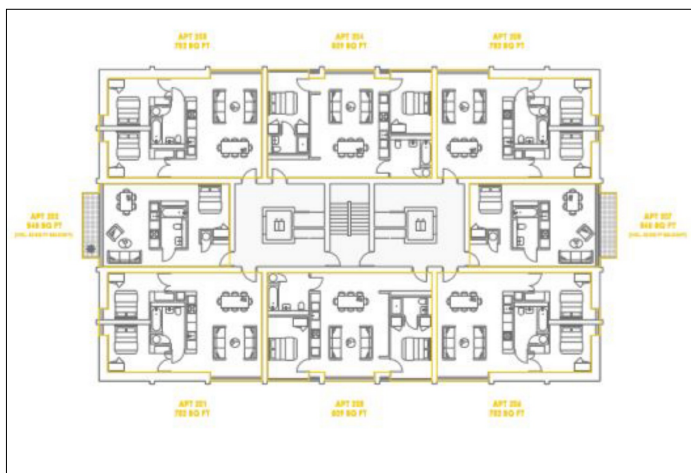
Phoenix offers 10 1 Floors with a mixture of One and Two Luxury larger than average apartments with 24 hour concierge, bike store and lush communal gardens. These offer all the residents BBQ's, Fire Pit and Chillout areas. Lets not forget its Pet Friendly as well.

Additional Information

Service charge: £2.87 per sq ft

Lease: 250 years from 2018

Ground rent: 1bed £306 - 2bed £448 pa 5 year review in line with RPI.



68 The Arches, Whitworth Street West, Manchester, M1 5WQ, England

0161 833 9499 manchester@jordanfishwick.co.uk www.jordanfishwick.co.uk

Offices also at: Chorlton | Didsbury | Disley | Glossop | Hale | Macclesfield | Manchester | Sale | Wilmslow | Withington



These particulars are believed to be accurate but they are not guaranteed and do not form a contract. Neither Jordan Fishwick nor the vendor or lessor accept any responsibility in respect of these particulars, which are not intended to be statements or representations of fact and any intending purchaser or lessee must satisfy himself by inspection or otherwise as to the correctness of each of the statements contained in these particulars. Any floorplans on this brochure are for illustrative purposes only and are not necessarily to scale.