



WATERHOUSE
COURT

Letchworth Garden City, Hertfordshire

Waterhouse Court

Letchworth Garden City,
Herts, SG6 1NY

Waterhouse Court is an exclusive, private development of twelve luxury 2-bedroom apartments and mews homes in a prime position overlooking Howard Park and Gardens, within a short stroll from the town centre and station.

Show home May 2021, ready June/July 2021

In a sought after and convenient location, this development comprises ten 2-bedroom apartments and two 2-bedroom mews homes.

These spacious homes boast a high specification finish and light, open plan accommodation. The contemporary stylish fitted kitchens come complete with integrated appliances and flooring throughout is fitted as standard. Each home benefits from an en-suite and fitted wardrobe to one bedroom. There is a communal landscaped courtyard area, allocated resident parking and visitor parking.

Perfect for the downsizer or professional, these luxury apartments offer a convenient location, high quality fixtures & fittings, low maintenance and peace of mind with a 10-year new homes warranty.

Call the New Homes office to discuss the opportunity to reserve off plan



32 Bridge Street, Hitchin, Hertfordshire. SG5 2DF
T: 01462 453195 **E:** newhomes@putterills.co.uk



View of development from Openshaw Way (main entrance)

SPECIFICATION:

GENERAL:

- Energy efficient gas boiler serving wall mounted radiators
- White downlights to all rooms other than bedrooms
- Low energy light fittings throughout
- Chrome electric points in kitchen/dining/living room areas
- BT and TV points to living room and bedrooms
- Walls to be decorated with emulsion paint to customer choice (subject to build stage)
- White painted stepped profile skirtings and architraves
- White Iseo doors with chrome plated ironmongery
- Double glazed timber windows with chrome plated ironmongery
- Fitted wardrobes to one bedroom
- All bedrooms to be carpeted
- Staircase area to be carpeted and fitted with secure Video entry system
- Communal gardens to be landscaped, turfed and paved
- Parking areas to be block paved with allocated and visitor parking spaces
- Large enclosed and secure cycle storage

NB: Photos shown are of previous development and show typical specification



KITCHEN:

- Contemporary fitted kitchens with composite worktops
- Door and worktop colour to customers choice (subject to build stage)
- Worktop upstands and splashback to hob
- Integrated appliances to include oven, hob, extractor hood, fridge freezer, dishwasher & washer/dryer. All Neff appliances (other than washer/dryer) with minimum energy rating of A.
- Amtico flooring – colour to customers choice (subject to build stage)

BATHROOM/EN-SUITE:

- Stylish luxury fitted bathrooms and en-suites
- White sanitaryware with chrome plated brassware
- Concealed dual flush WC and wall hung basin
- Fitted wall mirror
- Heated chrome towel rails
- Fitted thermostatic shower to main bathroom and en-suite
- Ceramic wall tiling from selected ranges (subject to build stage) – full height on shower and bath walls, half height behind WC and basin
- Amtico flooring – colour to customers choice (subject to build stage)



LOCATION:

This prestigious development is located a short stroll from the town centre and opposite Howard Park and formal gardens in the heart of the town.

The Park is surrounded by trees and has quiet areas for reading or relaxation. Its recently updated leisure facilities cater for young and old alike, to enjoy family activities on the lawns, play area or in the paddling pool, or more organised events in the bowls or social club.

Letchworth, is located in North Hertfordshire and is the World's first "Garden City", the vision of Ebenezer Howard in the early 20th Century, to combine the benefits of town and country living.

The town provides excellent amenities with a good choice of shops, boutiques, restaurants and cafes, with open green spaces and leisure facilities, including Letchworth Golf Club, Chesfield Downs Golf Club, Nuffield Heath Club, and the North Herts Leisure Centre.

Conveniently located for commuters or the opportunity to visit the wonderful Cities of London and Cambridge, the town is on the London Kings Cross to Cambridge mainline and offers a fast, frequent service. London Kings Cross takes just 28 minutes and Cambridge is 26 minutes to the east. Junction 9 on the A1(M) is less than a mile distance.

Luton airport is just 13 miles distance, with Heathrow (via M25) and Stansted in under an hour's journey time.

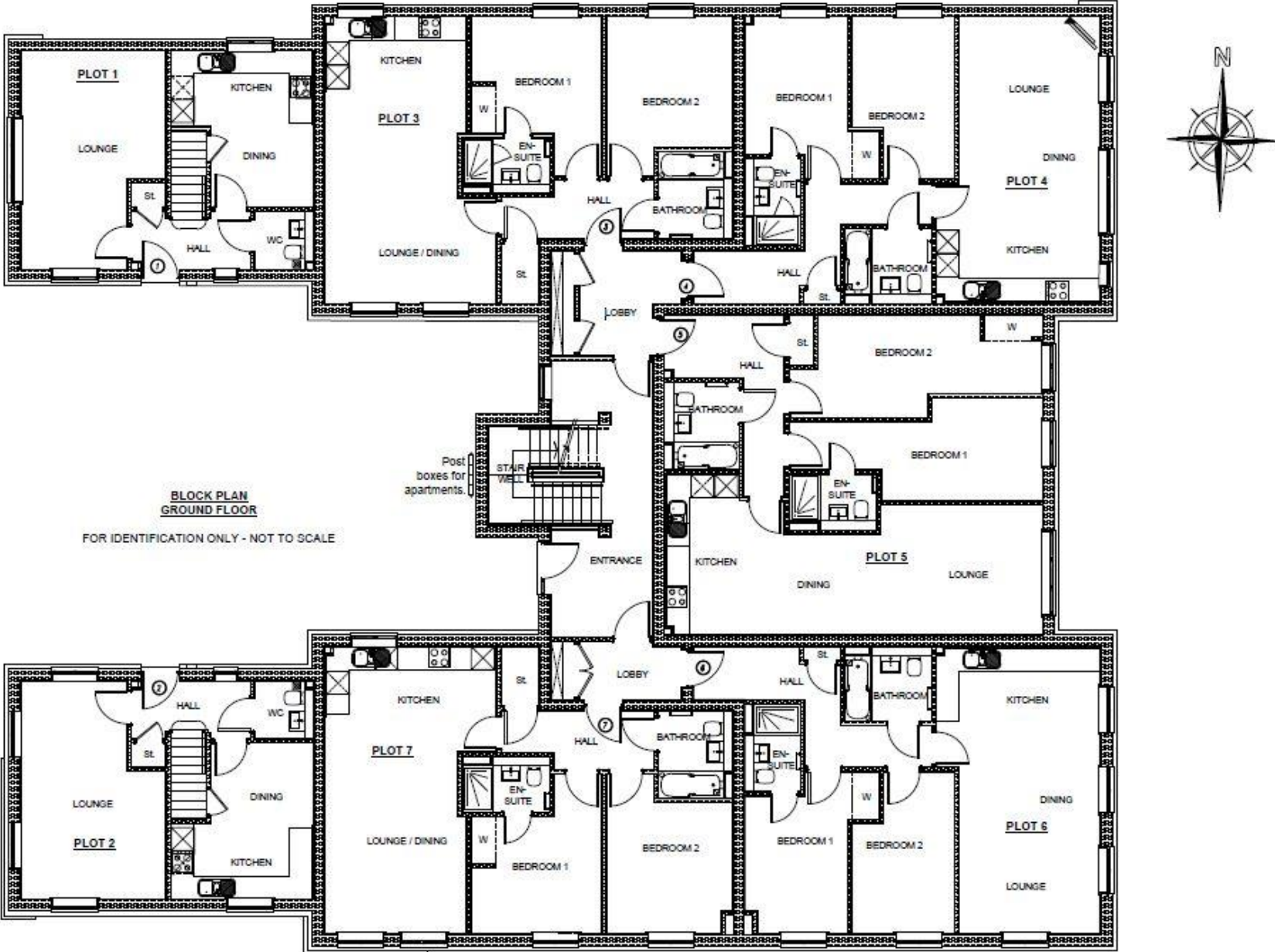
DIRECTIONS: Sat Nav : SG6 1NY



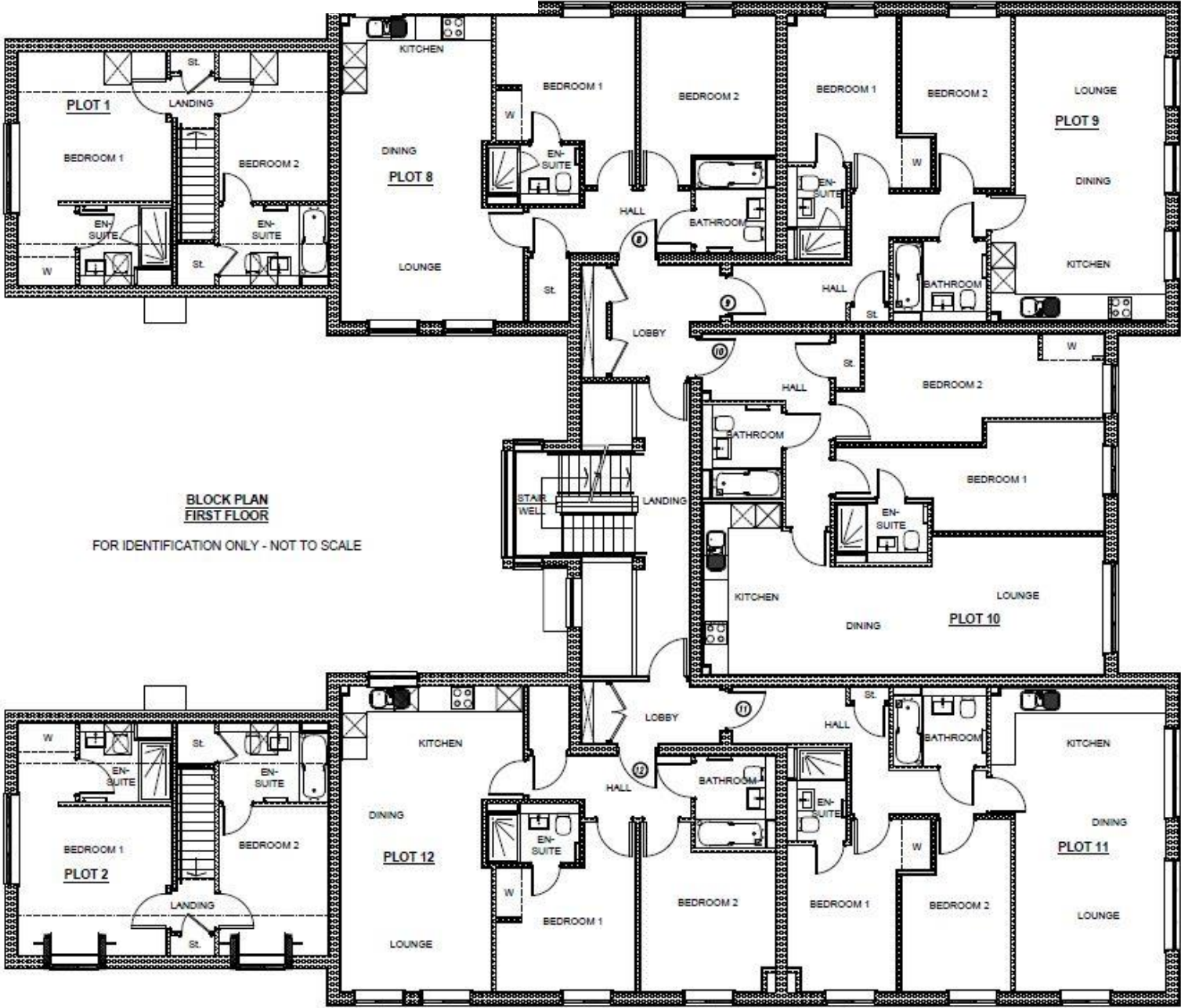


View of development from Howard Park & Norton Way South

GROUND FLOOR



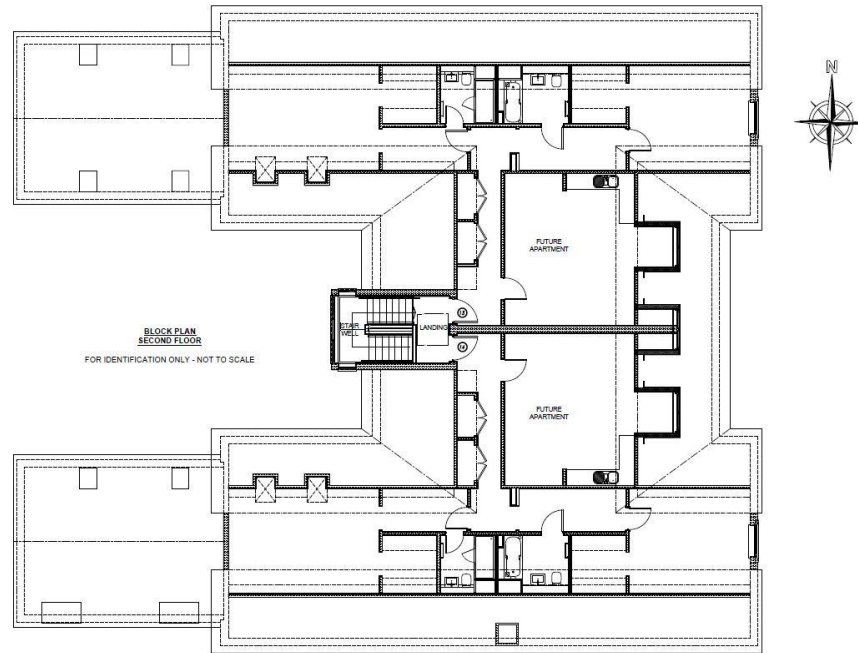
FIRST FLOOR



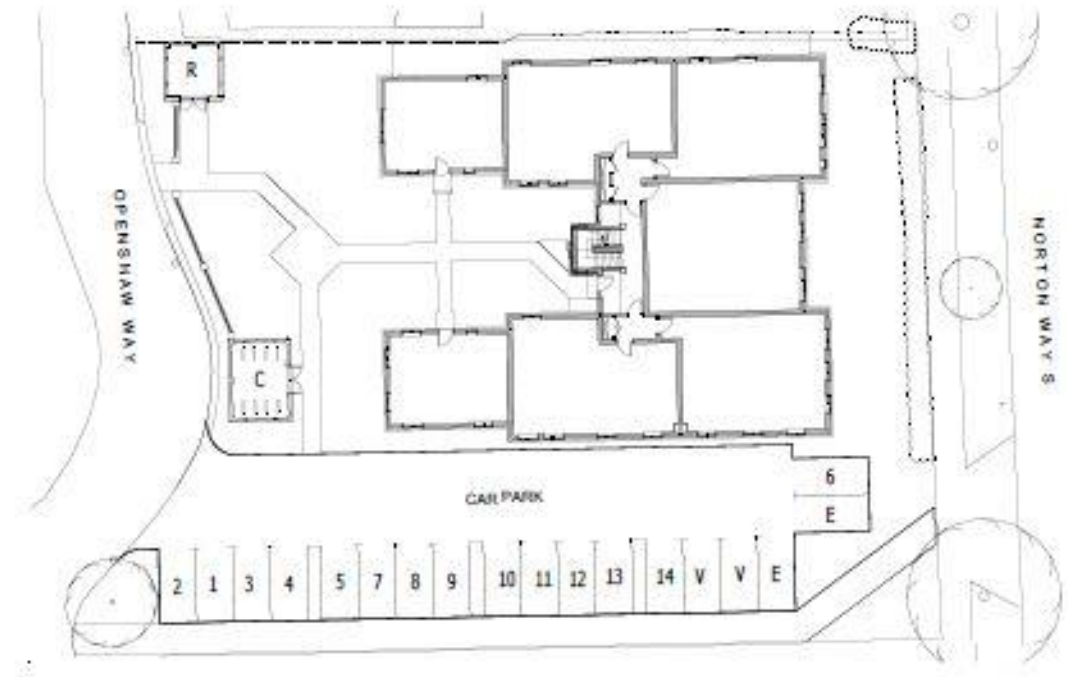
BLOCK PLAN
FIRST FLOOR

FOR IDENTIFICATION ONLY - NOT TO SCALE

SECOND FLOOR (potential future units)



SITE PLAN SHOWING PARKING



IMPORTANT NOTICE: These particulars are for guidance only. Whilst every effort has been made to ensure the accuracy of the descriptions, plans and measurements, these are not guaranteed and they do not form part of any contract. We have not tested any of the services, equipment or fittings. No persons in this firm's employment has the authority to make or give any representation or warranty in respect of the property. Interested parties should satisfy themselves as to the conditions of any such items considered material to their prospective purchase and may wish to consult an independent advisor. It should not be assumed that any of the articles depicted in these particulars are included in the purchase price. Floorplans are provided for guidance only. They are not to scale and must not form any part of a legal contract or be reproduced without the written consent of a partner of Putterills.