



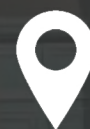
SIGNATURE

by Mark Small

NORTH EAST



9th AVENUE FLOWERS



QUEEN STREET, NEWCASTLE
QUAYSIDE NEWCASTLE,

Queen Street, Newcastle Quayside

Newcastle, NE1 3UG

A fantastic opportunity to acquire this spacious two double bedroom apartment situated in the heart of Newcastle's Quayside offering enviable living accommodation. The lease on this property has recently been extended to 157 years.

The accommodation begins with a communal entrance and private entrance hall which benefits from a security phone entry system for access. The apartment itself is comprised of an extensive, open plan living room and dining room, with wooden flooring throughout, and a stunning feature fireplace. The kitchen showcases fitted wall, base and drawer units for ample storage space, as well as an integrated oven and hob. There is also two generously sized bedrooms and a modern, three piece family bathroom.

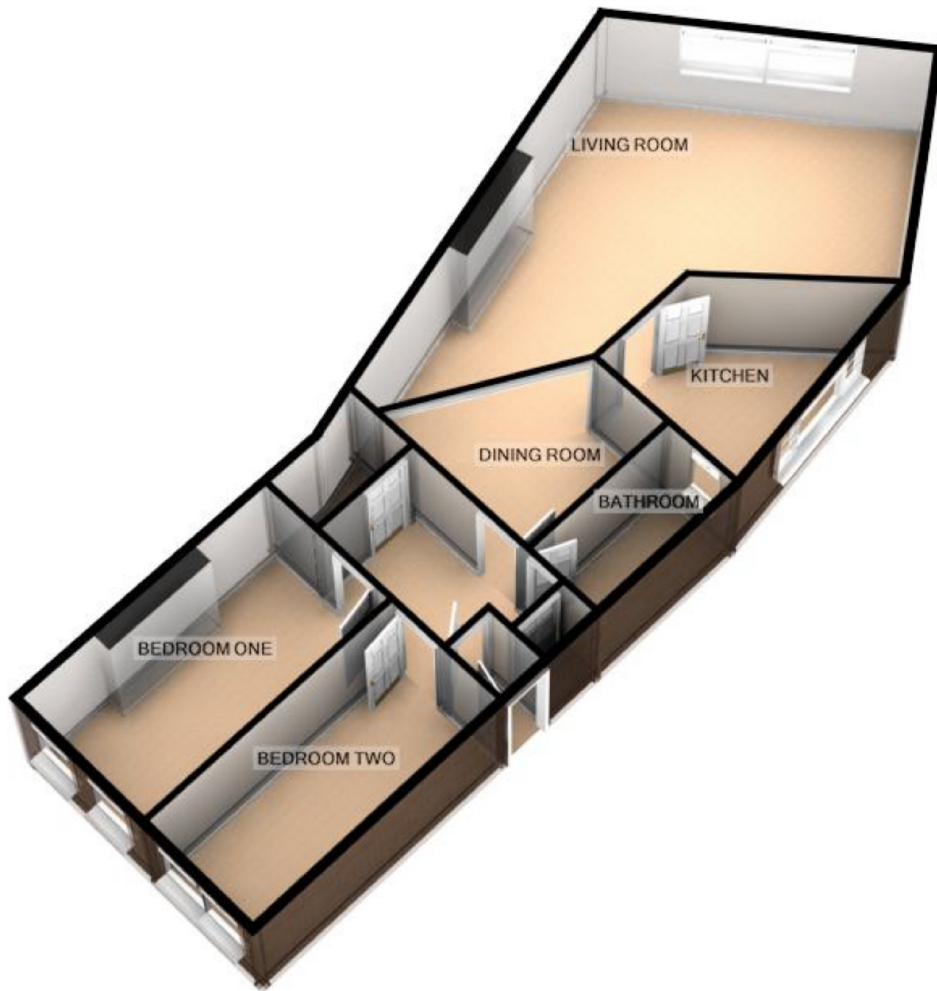
The property is ideally located close to the centre of Newcastle and excellent transportation links offering ease of access to other local towns and the Coast and benefits from gas central heating, security entry phone system, TV and telephone points.

Newcastle upon Tyne is a beautiful city on the River Tyne in northeast England. With its twin city, Gateshead, it was a major shipbuilding and manufacturing hub during the Industrial Revolution and is now a centre of business, arts and sciences. Spanning the Tyne, modern Gateshead Millennium Bridge, noted for its unique tilting aperture, is a symbol of the 2 cities. It has excellent shopping amenities, as well as nearby schooling.

Offers over £189,950



Property Floorplan



Measurements:

LIVING ROOM 24'10 X 13'5

DINING ROOM 12'10 X 9'3

KITCHEN 10'10 X 8'4

BEDROOM ONE 15'1 X 9'6

BEDROOM TWO 15'0 X 8'10

BATHROOM 9'0 X 6'5

EPC Rating

QUEEN STREET, NEWCASTLE QUAYSIDE, NEWCASTLE

For illustrative purposes only. Decorative finishes, fixtures, fittings and furnishings do not represent the current state of the property. Measurements are approximate. Not to scale
Made with Metropix ©2018



NO.1 AGENT IN THE NORTH EAST



"From organizing our first viewing to handing over the keys, we found the staff at Signature very professional and helpful. Finding a new home can be a stressful experience but we felt the service at Signature was smooth and hassle free." - Michelle

"I recently let my property through Signature. Every member of the team that I dealt with were friendly, professional and efficient." - Barry

TOP RATED ON ALLAGENTS.CO.UK

THE LARGEST NORTH EAST HYBRID ESTATE AGENCY WITH HIGH END BRANCHES

OUR LOCATIONS

Whitley Bay - 0191 251 3344
Tynemouth - 0191 296 6689
Whickham - 0191 432 5102
Jesmond - 0191 281 1037
Newcastle - 0191 640 2284
Ponteland - 01661 820 082

Gosforth - 0191 640 3523
Wallsend - 0191 432 4151
Heaton - 0191 432 4275
Cramlington - 01670 897 213
Morpeth - 01670 897 155
Forest Hall - 0191 2669 966

Gateshead - 0191 432 4294
Killingworth - 0191 640 3602
Durham - 0191 303 8252
Sunderland - 0191 543 6390
Alnwick - 01665 511 800
Ryton - 0191 4139 845