



Butler Sherborn
City and Rural

216 Banbury Road
Summertown, Oxford
OX2 7BY
T 01865 510000 F 01865 558877
E oxford@butlersherborn.co.uk



Gramps Hill

£1,250

LETCOMBE BASSETT

Wantage c3.2miles Didcot c13.1miles Oxford c20.2miles

A fantastic opportunity to rent this Brand New 3 bedroom detached house in the quite and picturesque village of Letcombe Bassett. The property is nearing completion and offers spacious and flexible accommodation throughout which includes, spacious entrance hall, cloakroom and a utility room which is accessed via the kitchen breakfast room. The sitting room is bright and benefits from French doors to the rear garden. Upstairs the property has three good sized bedrooms (master with en-suite) and principal bathroom. Outside the gardens front and rear have been seeded and to the rear is a large patio, the property will also have two off road parking spaces.

PLEASE NOTE, Further images will be taken and made available upon completion and once carpets have been fitted.



www.butlersherborn.co.uk



Butler Sherborn

City and Rural

216 Banbury Road
Summertown, Oxford

OX2 7BY

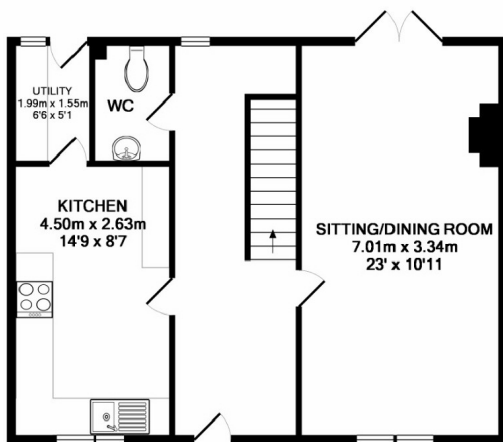
T 01865 510000 F 01865 558877

E oxford@butlersherborn.co.uk

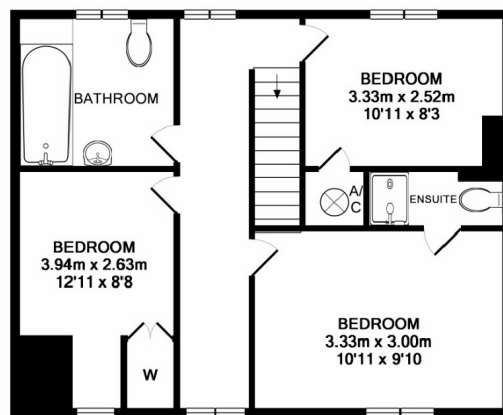
- Entrance hall
- Cloakroom
- Kitchen breakfast room
- Large sitting room
- Three bedrooms
- Master with en-suite
- Principal bathroom
- Front and Rear gardens

Contact: gareth@butlersherborn.co.uk
(t) 01865 510000 (e) gareth@butlersherborn.co.uk

Administration fees will apply when making an application to secure a tenancy through Butler Sherborn. Please note that these figures are excluded from rental figures advertised here.



GROUND FLOOR



FIRST FLOOR



TOTAL APPROX. FLOOR AREA 101.9 SQ.M. (1097 SQ.FT.)

Whilst every attempt has been made to ensure the accuracy of the floor plan contained here, measurements of doors, windows, rooms and any other items are approximate and no responsibility is taken for any error, omission, or mis statement. This plan is for illustrative purposes only and should be used as such by any prospective purchaser. Drawn by E8 Property Services. - www.e8ps.co.uk
Made with Metropix ©2017

SAT NAV (OX12 9LP)

Offices

Cirencester
Burford
Stow-on-the-Wold
Oxford
Wantage
London

Services

Residential Sales and Lettings
Farm and Estate Management
Professional Valuations
Land Sales and Acquisitions
Renewable Energy
Equestrian
New Homes and Development

You may download, store and use the material for your own personal use and research. You may not republish, retransmit, redistribute or otherwise make the material available to any party or make the same available on any website, online service or bulletin board of your own or of any other party or make the same available in hard copy or in any other media without the website owner's express prior written consent. The website owner's copyright must remain on all reproductions of material taken from this website.