

SNELLERS

ESTATE AGENTS



Longford Close, TW12

£2,550 PCM

A bright and airy three bedroom family home which has been recently refurbished. The open plan kitchen/diner is perfect for those who love to host.



The property opens into a welcoming reception room, perfect for relaxing or entertaining. To the rear is a stunning kitchen/dining room with an island and plenty of space for family meals. Bi-folding doors lead directly onto the garden, creating a seamless indoor-outdoor flow. A conveniently located WC completes this floor.

Upstairs, you have a family bathroom with two generous double bedrooms, alongside a versatile single bedroom which could also serve as a study or nursery.

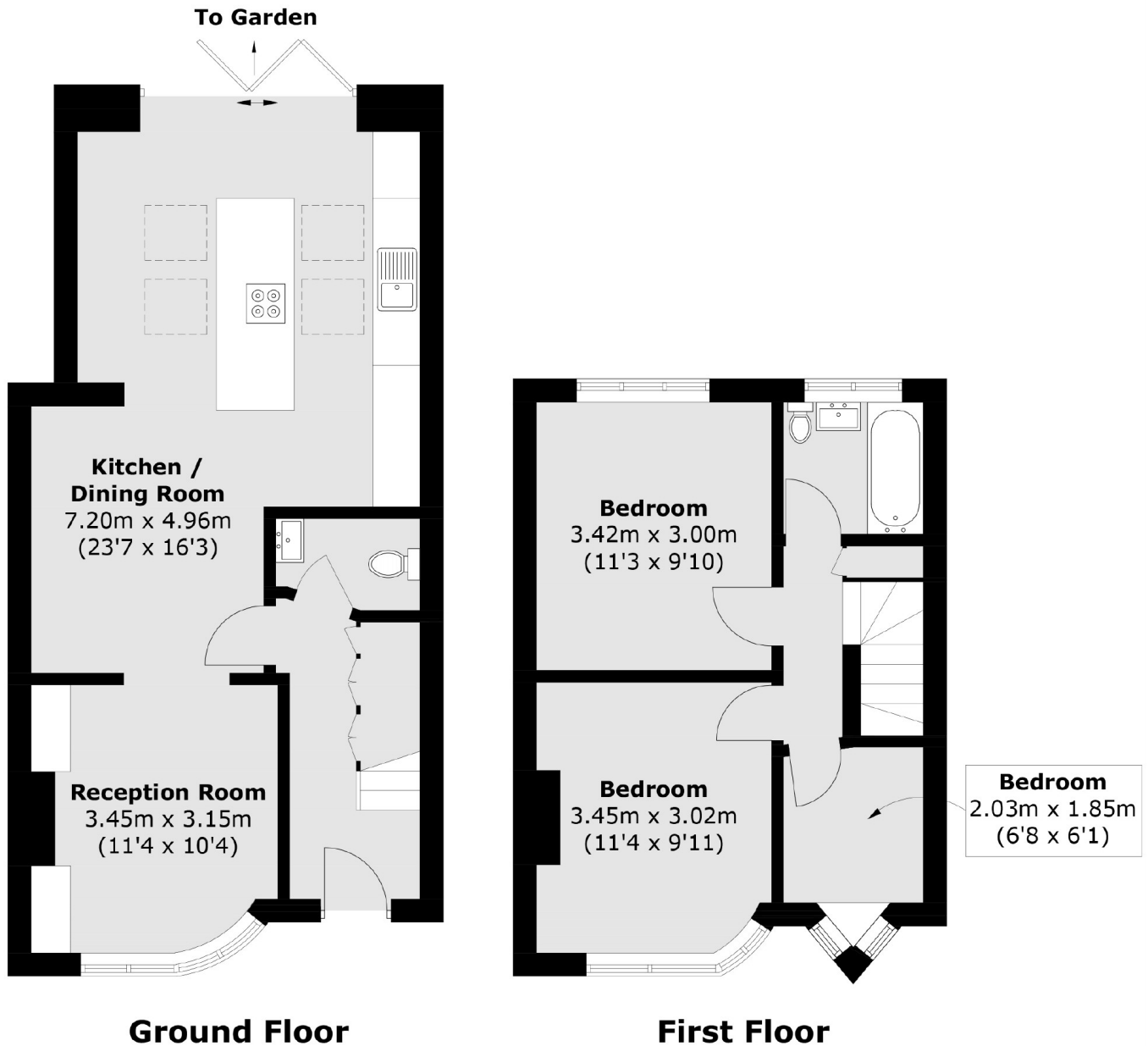
Longford Close is located within a quiet cul-de-sac close to local amenities and transport links into Heathrow, Kingston & Richmond.

- Open Plan Kitchen/Diner • Modern Interior • On Street Parking •
- Downstairs W/C • Close To Local Amenities • Wood Flooring •



SNELLERS

ESTATE AGENTS



Total area (approx.): 83.5 sq. m (898.8 sq. ft)

Snellers Hampton Hill Lettings
197-201 High Street
Hampton Hill
TW12 1NL
020 8783 3633
hamptonlettings@snellers.co.uk

Energy Rating: C We aim to make our particulars both accurate and reliable. However they are not guaranteed; nor do they form part of an offer or contract. If you require clarification on any points then please contact us, especially if you're traveling some distance to view. Please note that appliances and heating systems have not been tested and therefore no warranties can be given as to their good working order