

SNELLERS

ESTATE AGENTS



The Alders, TW13

£635,000

Situated on a corner plot is this double fronted four/five bedroom family home including off-street parking, a garage and a large private garden. The property also benefits from granted planning permission (P/2025/3063) to convert the existing residential house into two residential houses with associated parking, cycle and refuse storage.



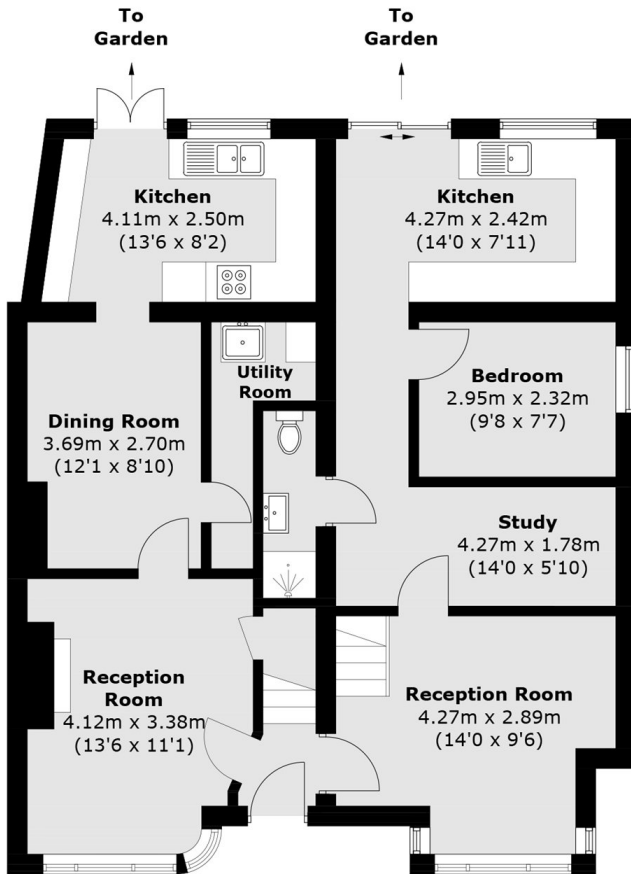
The Alders is a popular residential road located on the Hampton/Hanworth border and is conveniently situated for Bear Road recreational ground and an array of local shops including a Tesco Express, Boots Pharmacy and a Post Office. The property provides easy access onto the A316/M3 motorway leading into Central London and out onto the M25 motorway.

- Double Fronted • Corner Plot • Granted Planning Permission •
- Four/Five Bedrooms • Garage & Off-Street Parking • Large Private Garden •

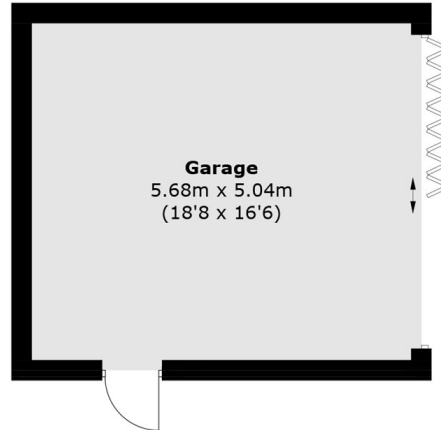


SNELLERS

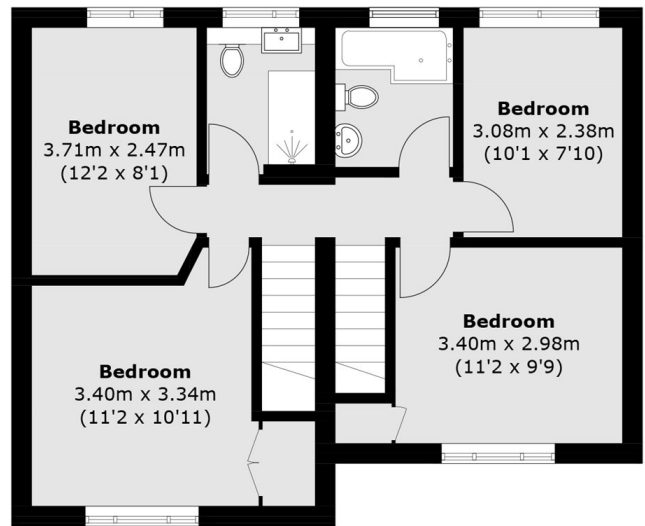
ESTATE AGENTS



Ground Floor



(Not Shown In Actual
Location / Orientation)



First Floor

Total area (approx.): 149.4 sq. m (1,608.2 sq. ft)
Garage: 29.5 sq. m (317.5 sq. ft)

Snellers Hampton Hill Sales
197-201 High Street
Hampton Hill
TW12 1NL
020 8783 0083
hamptonsales@snellers.co.uk

Energy Rating: We aim to make our particulars both accurate and reliable. However they are not guaranteed; nor do they form part of an offer or contract. If you require clarification on any points then please contact us, especially if you're traveling some distance to view. Please note that appliances and heating systems have not been tested and therefore no warranties can be given as to their good working order