



## Conifers Close, TW11

£369,950

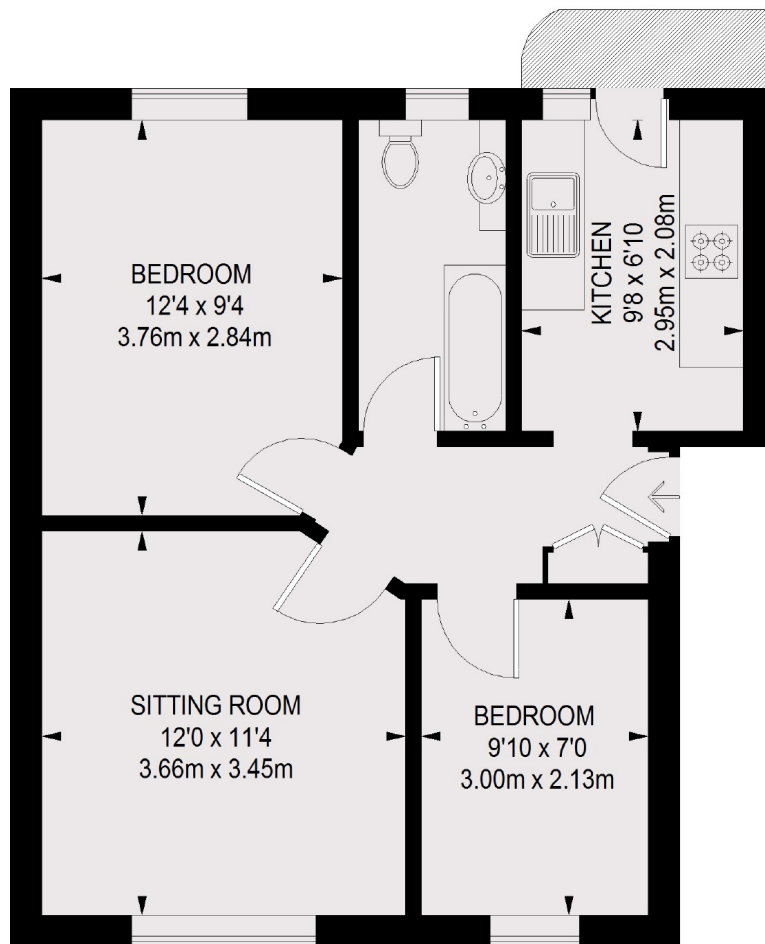
Tucked away in a peaceful little cul-de-sac, this first-floor flat is part of a lovely Art Deco development that's full of character and charm. With its private balcony, smart interiors and residents' parking, it's a great spot to settle into whether you're starting out, downsizing, or just after a calm corner of Teddington to call home.

The property is just 0.5 miles from Hampton Wick station and 0.8 miles from Teddington station. Bus routes and shops are moments away and the busy shopping centre of Kingston is a mile away.

- Large Reception • Two Bedrooms • Fitted Kitchen •
- Modern Bathroom • Private Balcony • Off-Street Parking •

# SNELLERS

ESTATE AGENTS



**FIRST FLOOR**

**TOTAL APPROX. FLOOR AREA**  
**492 SQ. FT. (45.7 SQ. M.)**

Snellers Teddington Sales  
74 Broad Street  
Teddington  
TW11 8QX  
020 8408 8040  
[teddingtonsales@snellers.co.uk](mailto:teddingtonsales@snellers.co.uk)

Energy Rating: D We aim to make our particulars both accurate and reliable. However they are not guaranteed; nor do they form part of an offer or contract. If you require clarification on any points then please contact us, especially if you're traveling some distance to view. Please note that appliances and heating systems have not been tested and therefore no warranties can be given as to their good working order