



## Hardman Road, KT2

£399,950

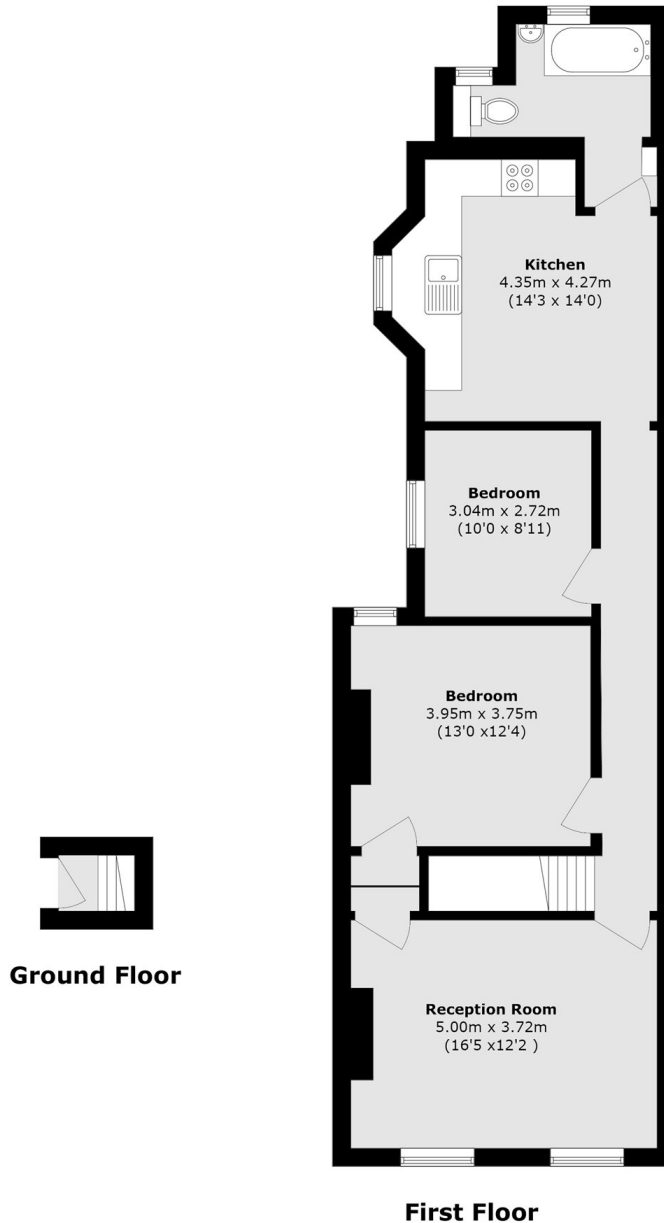
Step inside this bright and spacious first-floor conversion flat right in the heart of Kingston town centre. With over 850 sq ft to stretch out in, it instantly feels bigger than you'd expect, and the fact it comes with a share of the freehold and no onward chain just makes life that little bit easier. It's one of those homes you walk into and can immediately imagine yourself living in.

Step out your front door and you're moments from Kingston's buzzing high street, riverside walks, cafés, shops, and the station for an easy commute. Everything you need is genuinely on your doorstep. If you want a home where convenience meets character and where you can move straight in without any fuss this flat really does tick all the boxes.

- Large Reception • Spacious Kitchen • Two Bedrooms •
- Bathroom • Shared Freehold • No Chain •

# SNELLERS

ESTATE AGENTS



Total area (approx.): 79.6 sq. m (856.81 sq. ft)

Snellers Teddington Sales  
74 Broad Street  
Teddington  
TW11 8QX  
020 8408 8040  
teddingtonsales@snellers.co.uk

Energy Rating: D We aim to make our particulars both accurate and reliable. However they are not guaranteed; nor do they form part of an offer or contract. If you require clarification on any points then please contact us, especially if you're traveling some distance to view. Please note that appliances and heating systems have not been tested and therefore no warranties can be given as to their good working order