

SNELLERS

ESTATE AGENTS



Heath Gardens, TW1

£4,300 PCM

Set within one of central Twickenham's most sought after and pretty roads, stands this fine example of a four double bedroom semi-detached family home.

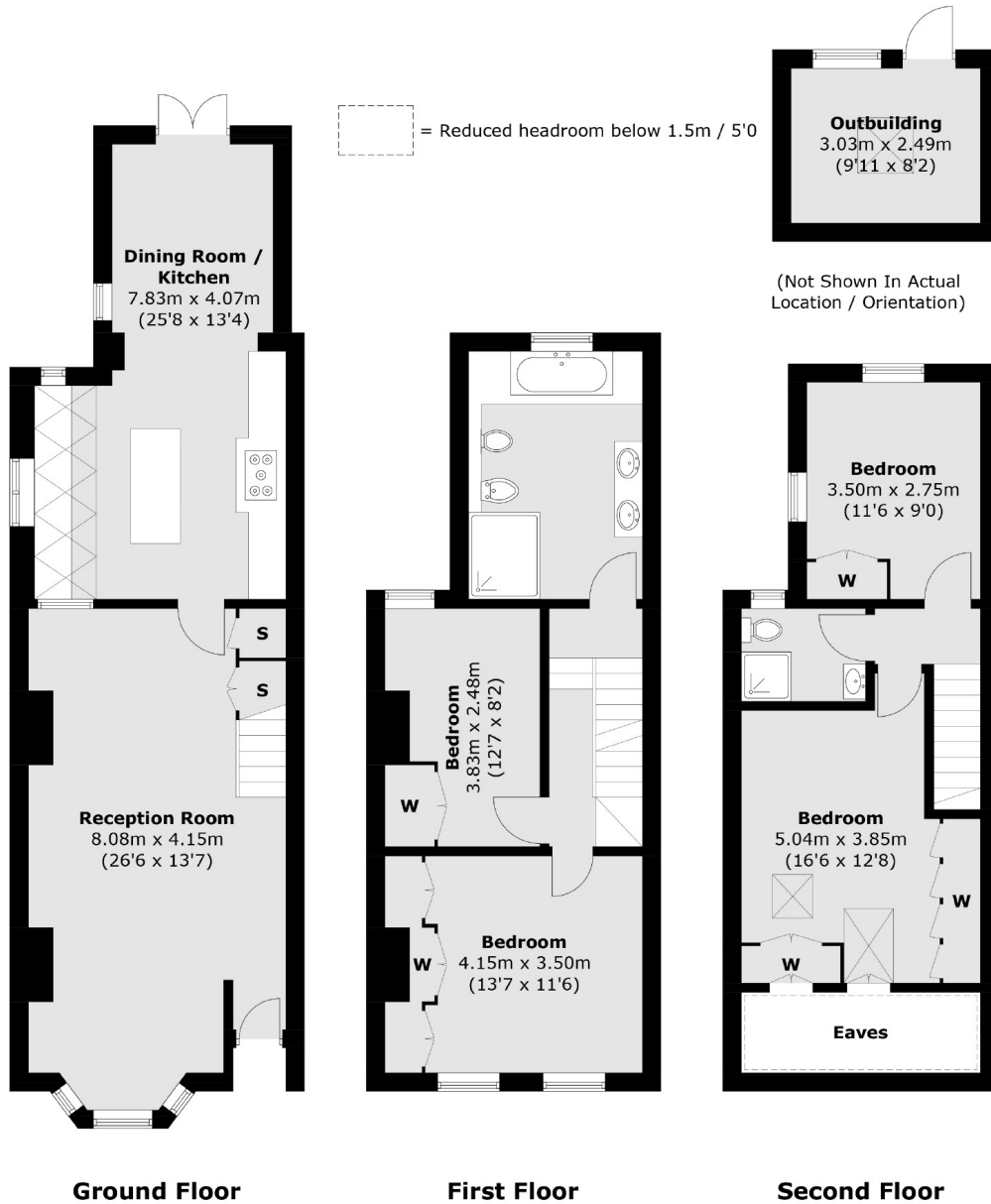
Having been finished to a very high standard throughout, this extended property provides a rare combination of a period property with large well proportioned living space. The property offers a large reception room, spacious kitchen with a large centre island and a dining area leading out to the private garden. Further benefits include side access, a garden office with power supply, a large four piece bathroom and spacious living conditions.

Heath Gardens is a sought after road within excellent school catchments, just 0.3 miles to Twickenham Green and only 0.8 miles to Twickenham mainline station.

- Four Double Bedrooms • Semi Detached • Sought After Location •
- Garden Office • Loft & Rear Extended • Modern Throughout •

SNELLERS

ESTATE AGENTS



Total area (approx.): 132.7 sq. m (1,428.4 sq. ft)
(Excluding Eaves)
Outbuilding area (approx.): 7.7 sq. m (82.9 sq. ft)

Snellers Twickenham Lettings
64-66 Heath Road
Twickenham
TW1 4BX
020 8892 5678
twickenhamlettings@snellers.co.uk

Energy Rating: C We aim to make our particulars both accurate and reliable. However they are not guaranteed; nor do they form part of an offer or contract. If you require clarification on any points then please contact us, especially if you're traveling some distance to view. Please note that appliances and heating systems have not been tested and therefore no warranties can be given as to their good working order