

SNELLERS

ESTATE AGENTS



Amyand Park Road, TW1

£1,100,000

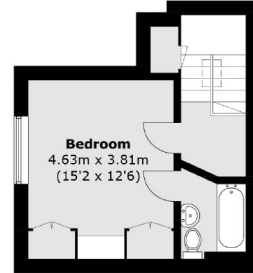
A fantastic opportunity to purchase this freehold property, excellently located for fantastic primary and secondary schools as well as Twickenham Station, Twickenham and St. Margarets high streets and Marble Hill Park. Church Street and the River Thames are half a mile away with boutique shops, bars, restaurants and beautiful riverside walks which take you to Richmond Bridge. There is a large garden and off-street parking for multiple cars. The property is currently split into three apartments. There is potential to convert the property into one house or to keep the existing layout with potential to renovate the property either way.

Amyand Park Road is located in the heart of Twickenham, just 0.4 miles from both Twickenham Station, St. Margarets Station and Marble Hill Park. There are plenty of fantastic primary and secondary schools nearby including the highly regarded and sought after Orleans Park Secondary School.

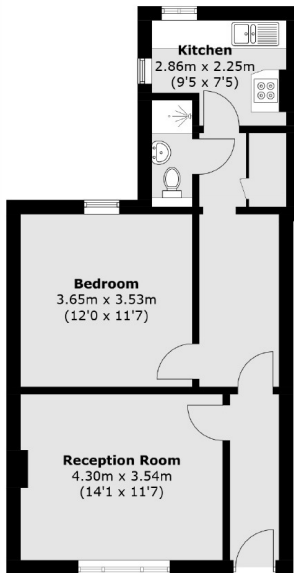
- Victorian Property • Freehold • Three Apartments •
- Off-Street Parking • Large Garden • Renovation Potential •

SNELLERS

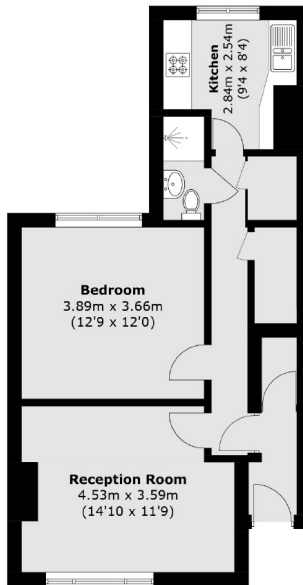
ESTATE AGENTS



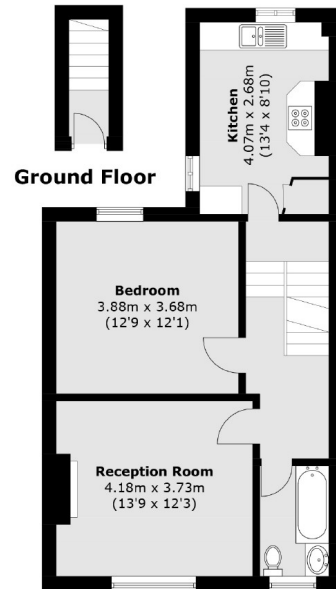
Second Floor



Lower Ground Floor



Raised Ground Floor



First Floor

Total area (approx.): 184.6 sq. m (1,987.0 sq. ft)

Snellers Twickenham Sales
64-66 Heath Road
Twickenham
TW1 4BX
020 8892 5555
twickenhamsales@snellers.co.uk

Energy Rating: D We aim to make our particulars both accurate and reliable. However they are not guaranteed; nor do they form part of an offer or contract. If you require clarification on any points then please contact us, especially if you're traveling some distance to view. Please note that appliances and heating systems have not been tested and therefore no warranties can be given as to their good working order