



Wellesley Road, TW2

£505,000

Ideally located just moments from Strawberry Hill Station, this well-presented two double bedroom split-level apartment offers almost 800 sq ft of bright, versatile living space. Set on the top floor, the property features a spacious kitchen at the front and a generous lounge/diner opening onto a private balcony, perfect for relaxing or entertaining. Upstairs boasts two double bedrooms and a family bathroom

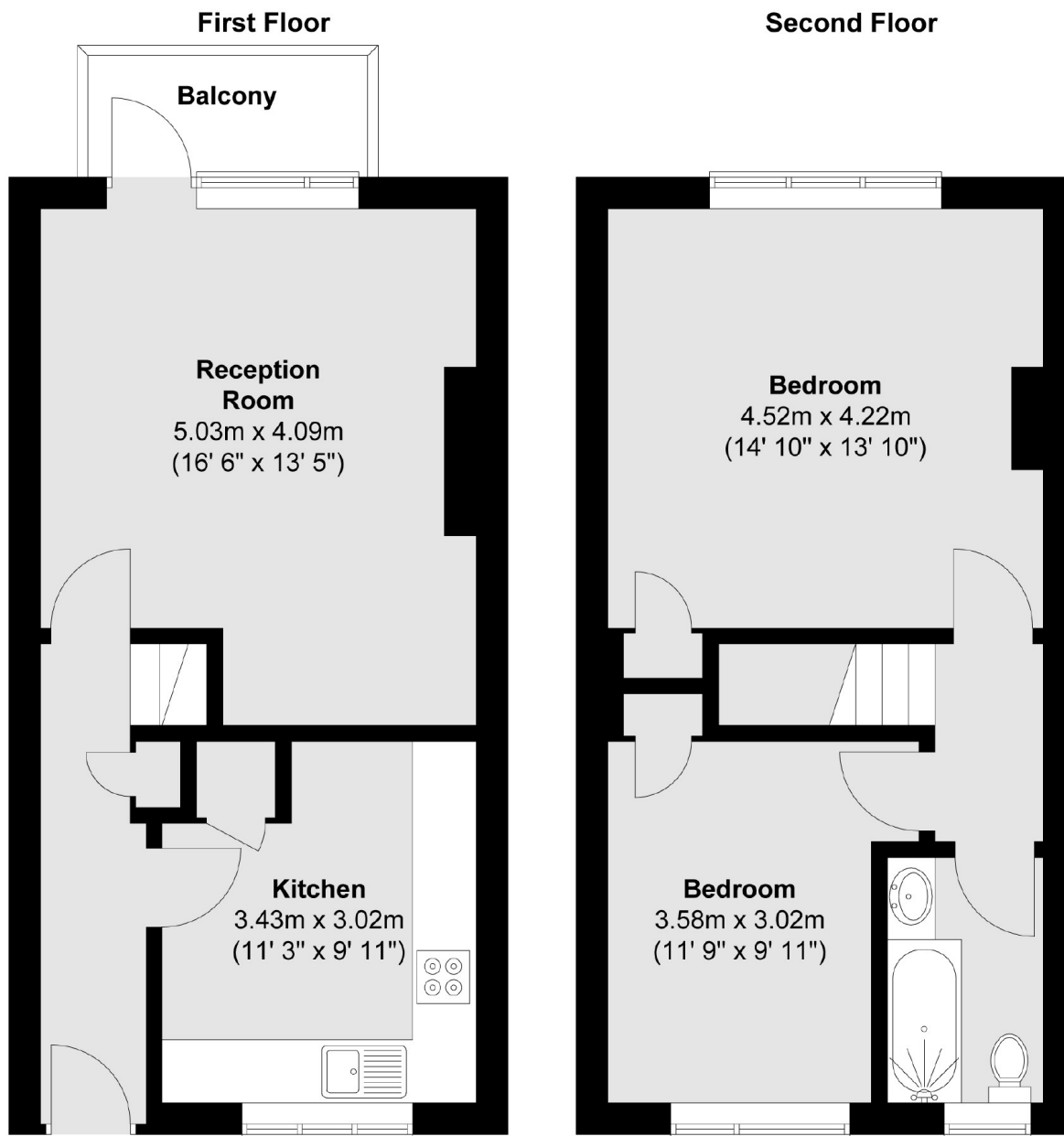
The property further benefits from a share of the freehold, a new roof, one of only 4 garages plus off street parking in front the garage as well, and close proximity to outstanding schools including the highly regarded Waldegrave Secondary School. A rare find not to be missed!

Set right in the heart of Strawberry Hill Village on Wellesley Road, Roymount Court enjoys an enviable position opposite Strawberry Hill Golf Course, and is just moments from Strawberry Hill Train Station, with frequent trains direct into Waterloo, Wimbledon, Kingston and beyond.

- Two Double Bedrooms • Split-Level • Top Floor •
- Garage & Private Parking • Share Of Freehold • Close to Station •

SNELLERS

ESTATE AGENTS



Total area (approx.) : 72.6 sq. m (781 sq. ft)
Total balcony area (approx.) : 3.2 sq. m (34 sq. ft)

Snellers Twickenham Sales
64-66 Heath Road
Twickenham
TW1 4BX
020 8892 5555
twickenhamsales@snellers.co.uk

Energy Rating: C We aim to make our particulars both accurate and reliable. However they are not guaranteed; nor do they form part of an offer or contract. If you require clarification on any points then please contact us, especially if you're traveling some distance to view. Please note that appliances and heating systems have not been tested and therefore no warranties can be given as to their good working order