



Lyndhurst Avenue, TW2

£550,000

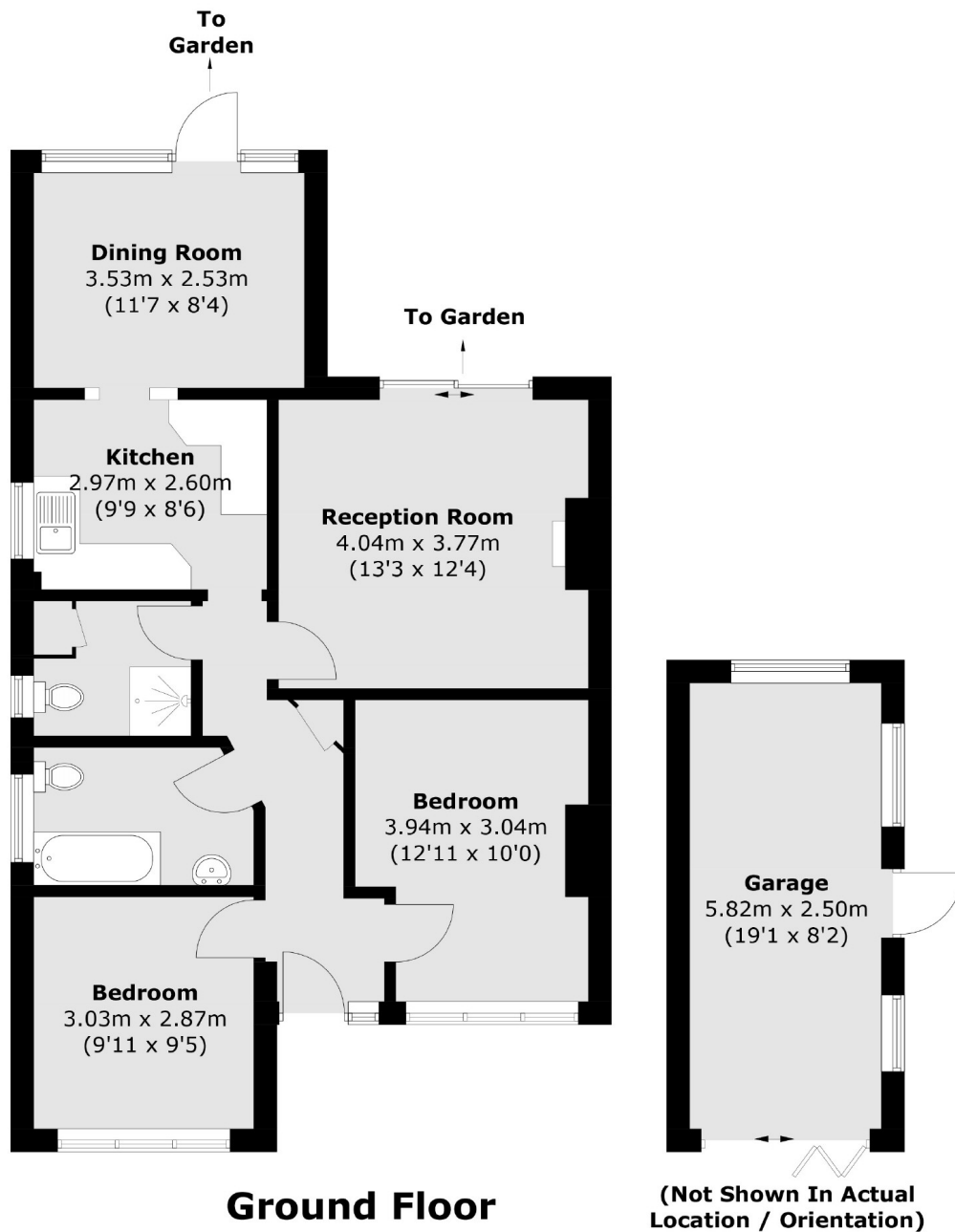
This semi-detached two bedroom, two bathroom bungalow offers almost 800 sq ft of well proportioned living accommodation. With a large garden, off-street parking, garage and potential to extend STPP this property is not to be missed.

Lyndhurst Avenue is a residential road forming part of the popular Woodlawn Estate. It is excellently located for an array of local schools, Crane Park and Whitton Station and High Street.

- Semi-Detached Bungalow • Two Bedrooms • Two Bathrooms •
- Potential To Extend STPP • Garage • Off-Street Parking •

SNELLERS

ESTATE AGENTS



Total area (approx.): 72.6 sq. m (781.5 sq. ft)
Garage: 15.0 sq. m (161.5 sq. ft)

Snellers Twickenham Sales
64-66 Heath Road
Twickenham
TW1 4BX
020 8892 5555
twickenhamsales@snellers.co.uk

Energy Rating: D We aim to make our particulars both accurate and reliable. However they are not guaranteed; nor do they form part of an offer or contract. If you require clarification on any points then please contact us, especially if you're traveling some distance to view. Please note that appliances and heating systems have not been tested and therefore no warranties can be given as to their good working order