

SNELLERS

ESTATE AGENTS



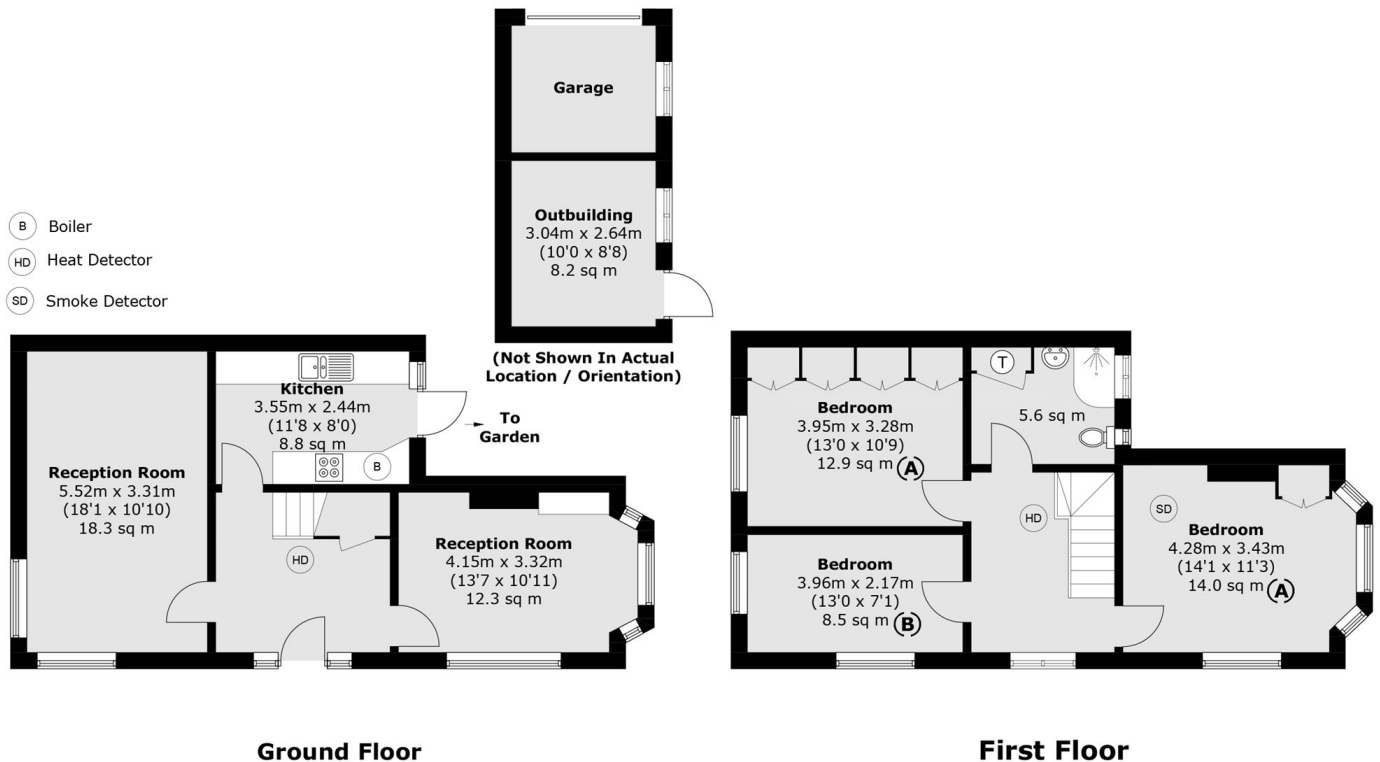
Central Avenue, TW3

£2,400 PCM

A spacious three-bedroom family home in a quiet, sought-after location close to Hounslow town centre. The property features three double bedrooms, two bright reception rooms, a modern fitted kitchen and a private garden.

The nearest Underground station is Hounslow Central (0.25 miles). Offering direct services to Heathrow Airport and Central London.

- Three Double Bedrooms • Two Reception Rooms • Unfurnished •
- Private Garden • Unfurnished • Permit Street Parking •



Total area (approx.): 102.9 sq. m (1,107.6 sq. ft)
 Outbuilding: 8.2 sq. m (88.3 sq. ft)
 (Excluding Garage)

National Guidelines (may differ depending on Local Authority).

- E) 4.6 square meters > = no one
- D) 4.6 - 6.5 square meters = 1/2 person (Child up to 10 years)
- C) 6.5 - 8.4 square meters = 1 person
- B) 8.4 - 10.2 square meters = 1 1/2 people
- A) 10.2 square meters < = 2 people

Snellers Twickenham Lettings
 64-66 Heath Road
 Twickenham
 TW1 4BX
 020 8892 5678
twickenhamlettings@snellers.co.uk

Energy Rating: D We aim to make our particulars both accurate and reliable. However they are not guaranteed; nor do they form part of an offer or contract. If you require clarification on any points then please contact us, especially if you're traveling some distance to view. Please note that appliances and heating systems have not been tested and therefore no warranties can be given as to their good working order