

SNELLERS

ESTATE AGENTS



Station Road, TW1

£325,000

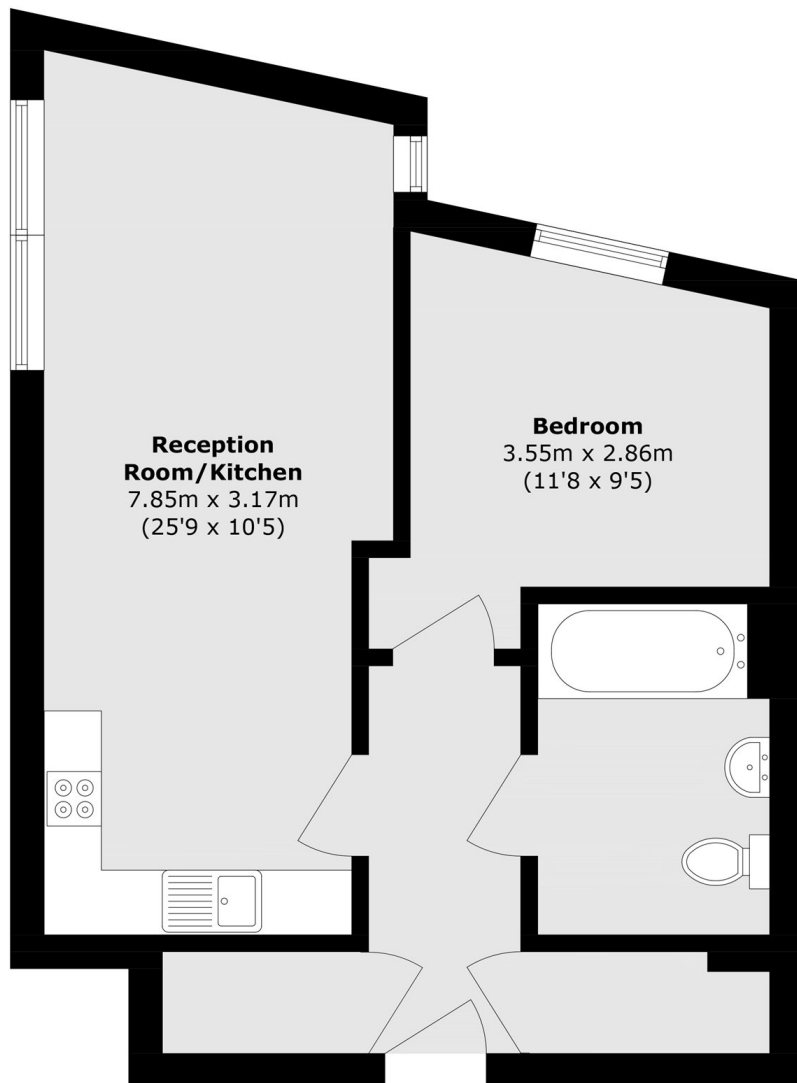
Located in the heart of Twickenham is this well presented ground floor apartment offering a spacious open-plan living room and kitchen with space for dining, one double bedroom and a large bathroom. Further benefits include use of a shared garden and bike storage, a long lease and no onward chain.

Whitehead Court is conveniently located just 0.2 miles from Twickenham Station for fast trains into London, and close to the high street with easy access to shops and transport links.

- Central Location • Well Presented • One Double Bedroom •
- Close to Station • No Onward Chain • Long Lease •

SNELLERS

ESTATE AGENTS



Total area (approx.): 48.7 sq. m (524.2 sq. ft)

Snellers Twickenham Sales
64-66 Heath Road
Twickenham
TW1 4BX
020 8892 5555
twickenhamsales@snellers.co.uk

Energy Rating: C We aim to make our particulars both accurate and reliable. However they are not guaranteed; nor do they form part of an offer or contract. If you require clarification on any points then please contact us, especially if you're traveling some distance to view. Please note that appliances and heating systems have not been tested and therefore no warranties can be given as to their good working order