



Rutland Road, TW2

£699,950

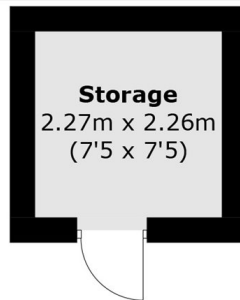
Nestled on a quiet and sought-after residential road, this three-bedroom semi-detached family home offers generous living space and fantastic potential for modernisation and extension (subject to the necessary planning permissions). Further benefits include off street parking for multiple cars, integral garage, downstairs W/C, and rear garden,

Rutland Road is tucked away off Staines Road, between Fourth Cross Road and Fifth Cross Road and is 0.5 miles from Twickenham Green. Rutland Road is in catchment for many local outstanding schools locally and is a short walk from the popular local parks and local amenities.

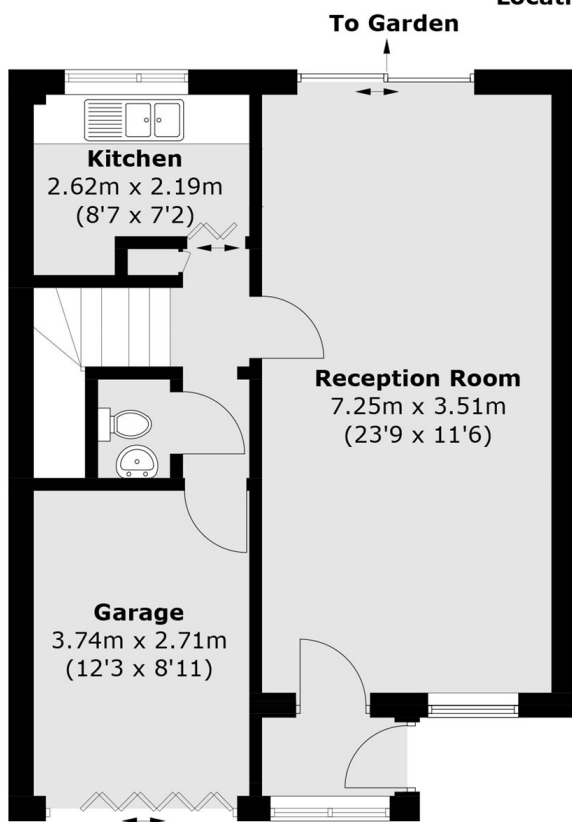
- Three Good Sized Bedrooms • Quiet Road • Great School Catchment •
- Spacious Living Space • Integral Garage • Off Street Parking •

SNELLERS

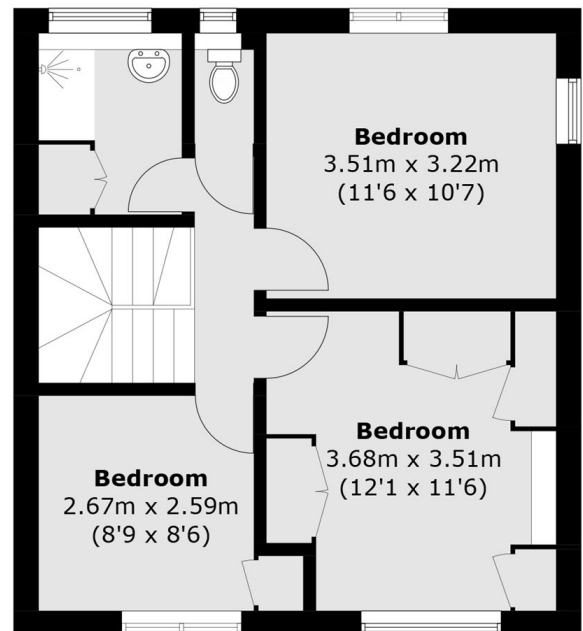
ESTATE AGENTS



(Not Shown In Actual
Location / Orientation)



Ground Floor



First Floor

Total area (approx.): 95.9 sq. m (1,032.2 sq. ft)

Storage (approx.): 5.2 sq. m (56.0 sq. ft)

Snellers Twickenham Sales
64-66 Heath Road
Twickenham
TW1 4BX
020 8892 5555
twickenhamsales@snellers.co.uk

Energy Rating: B We aim to make our particulars both accurate and reliable. However they are not guaranteed; nor do they form part of an offer or contract. If you require clarification on any points then please contact us, especially if you're traveling some distance to view. Please note that appliances and heating systems have not been tested and therefore no warranties can be given as to their good working order